

Mineral Site Passport

Dubovc

Commodity:

Magnesite

Map Sheet:

K 34 - 42 D

Ownership:

Government

Status of Project:

Under exploration.

Infrastructure:

Good infrastructure (road, electricity and railway).

Regional Geology:

Tectonic blocks of serpentinites within the Zubin Potok Upper Cretaceous Unit.

Mineralization / Type of Deposit:

The magnesite deposits and occurrences are associated with the serpentinite massif of Dubovc. The magnesite mineralization appears as hydrothermal enrichments below carbonate rocks of Oligocene age.

Extension of Mineral Occurrence:

The ore bodies have a thickness of 7 to 25 m. The ore horizons of the deposit east of Glladnaselle are up to 2 m thick with single horizons reaching 20 m.

Resources:

According to Dushi (2), the technology for processing the magnesite ore did not reach the necessary industrial level. This was the reason why the mine operation has been halted.

Past Production:

The deposit was explored and mined in the past.

Mining Method:

Open pit/underground.

General Evaluation:

Further exploration and testing the ore for industrial use.



Mineral Site Passport Dubovc

Additional Graphics:

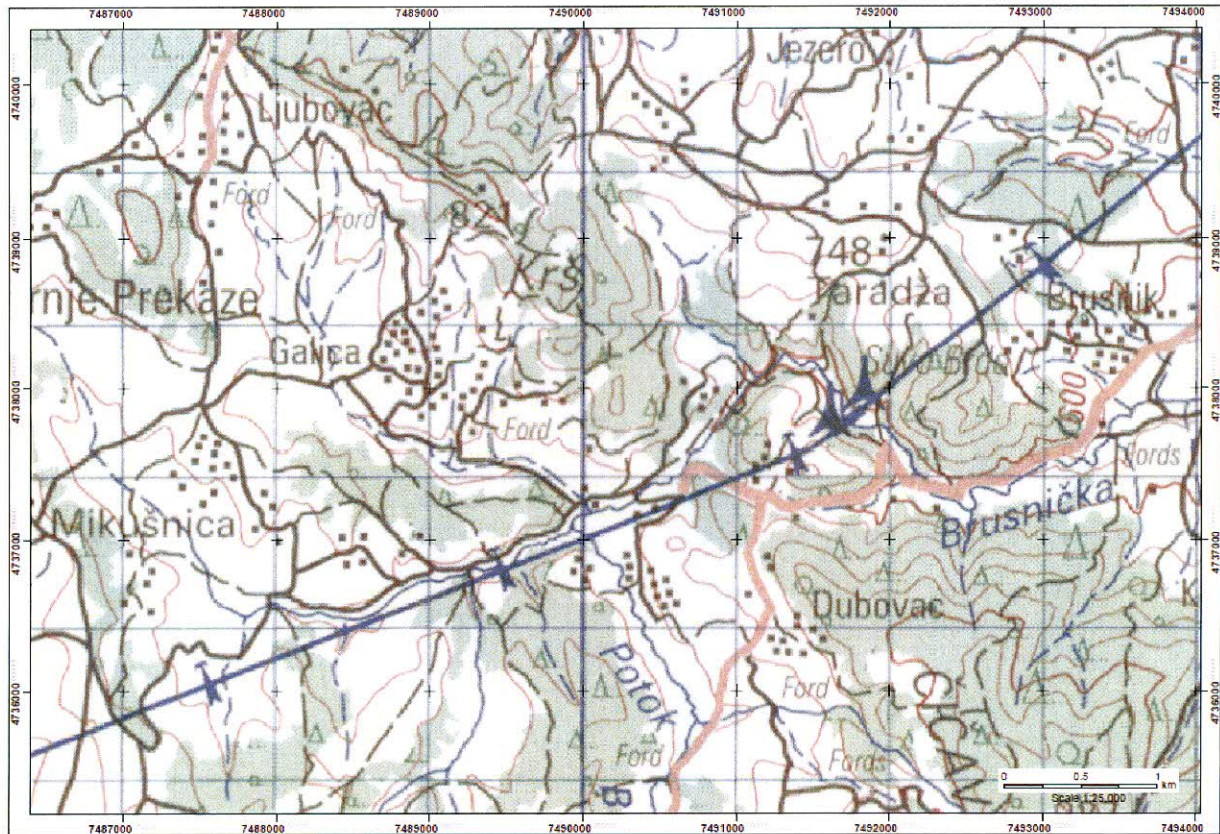


Fig.1: Topographical Map of the Dubovc area.

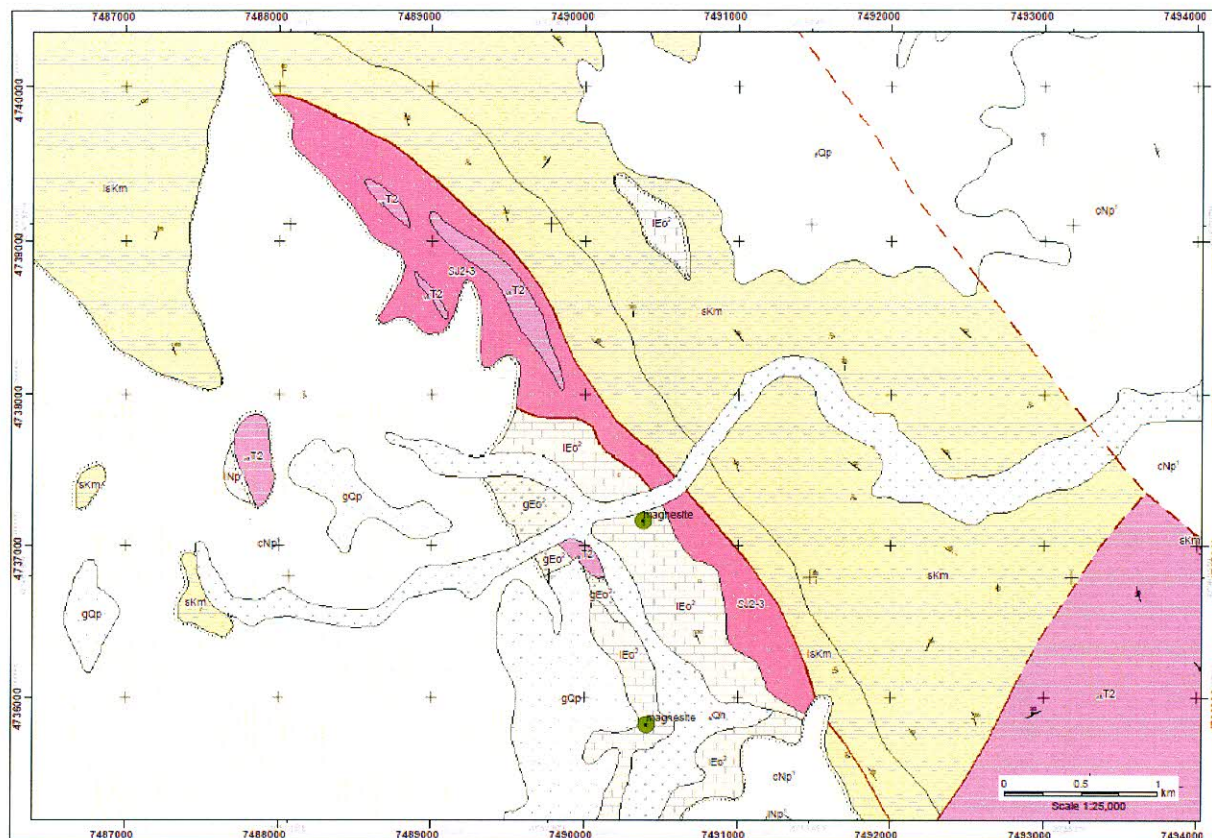
Mineral Site Passport Dubovc

Fig. 2: Digital geological map of the prospective area "Dubovc", delimited by Cenozoic sediments covering the serpentinites.

References:

1. BEAK CONSULTANTS GMBH: The Compilation of the Geoscientific Maps of Kosovo – Map of Minerals (2nd Update) and Metallogenic / Minerogenic Map of Kosovo – Final Report: Map Description. - Beak Consultants GmbH - Prishtinë, March 2008.
2. DUSHI, M.: Pasuritë Minerale të Kosovës. – Akademia e Shkencave dhe e Arteve e Kosovës, Libri 15, Libri 16, Prishtinë 2009, in Albanian (The Mineral Resources of Kosova, 2 vol., with English summary).
3. BEAK CONSULTANTS GMBH: Kosovo Mineral Resources Management Plan, 2009.
4. Kosova Logistik GmbH & Kartographie Huber sh.p.k.: Kosovo Mineral Resources Management Plan 2010.

