

Mineral Site Passport

Bushince-Bolec

Commodity:

Lead, Zinc

Map Sheet:

K 34 - 55B, K34 - 56A

Ownership:

Government

Status of Project:

Under exploration

Infrastructure:

The next road is approx. 4 km away. The next railway station is located at approx. 30 km. Next access to power grid is approx. 3 km away.

Regional Geology:

The regional geological units are the Artana (Novo Brdo) Metamorphic Unit and the Kamenicë Cenozoic Basin. They are situated in the Internal Vardar Subzone and the Dardanian Massif.

The rock sequences are:

- Quaternary alluvial and diluvial sediments as thin cover
- Pliocene sand and clay in a small basin
- Oligocene amphibole-pyroxene andesite as well as volcanic breccias and agglomerates
- Oligocene sandstones, tuffites, tuffs, breccias, mudstone and magnesite bearing layers
- Paleozoic sericite and quartzite schists with intercalations of marble, quartzites and amphibolites, and gneiss-granites.

Mineralization / Type of Deposit:

Potential Pb-Zn-Ag-Au hydrothermal sulphide veins and veinlets genetically associated with Cenozoic potassium-rich volcanism in volcanic rocks in the central part of Zone of Interest and in metamorphic limestone-schist series in the southeastern part of Zone of Interest.

Extension of Mineral Occurrence:

The surface of this area is approximately 60 km².

Resources:

At the end of 1950s and in the 1960s, southwest of the village Bolec a manganese occurrence (mainly psilomelan) was investigated by drilling, trenching and underground workings. The ore body was recorded approx. 250 m along strike and to a depth of at least 100 m. The thickness of the ore was determined to be 10 m. Analyses have given the following results: Up to 40 % Mn, 3.9 % Pb and up to 6.3 % Zn. A stream sediment sampling program in 2006/2007 confirmed anomalies for these elements.

Past Production:

Only exploration work in the 1950s and 1960s are recorded.

Mining Method:

Underground mining was envisaged.



Mineral Site Passport Bushince - Bushince Bolec

Additional Graphics:

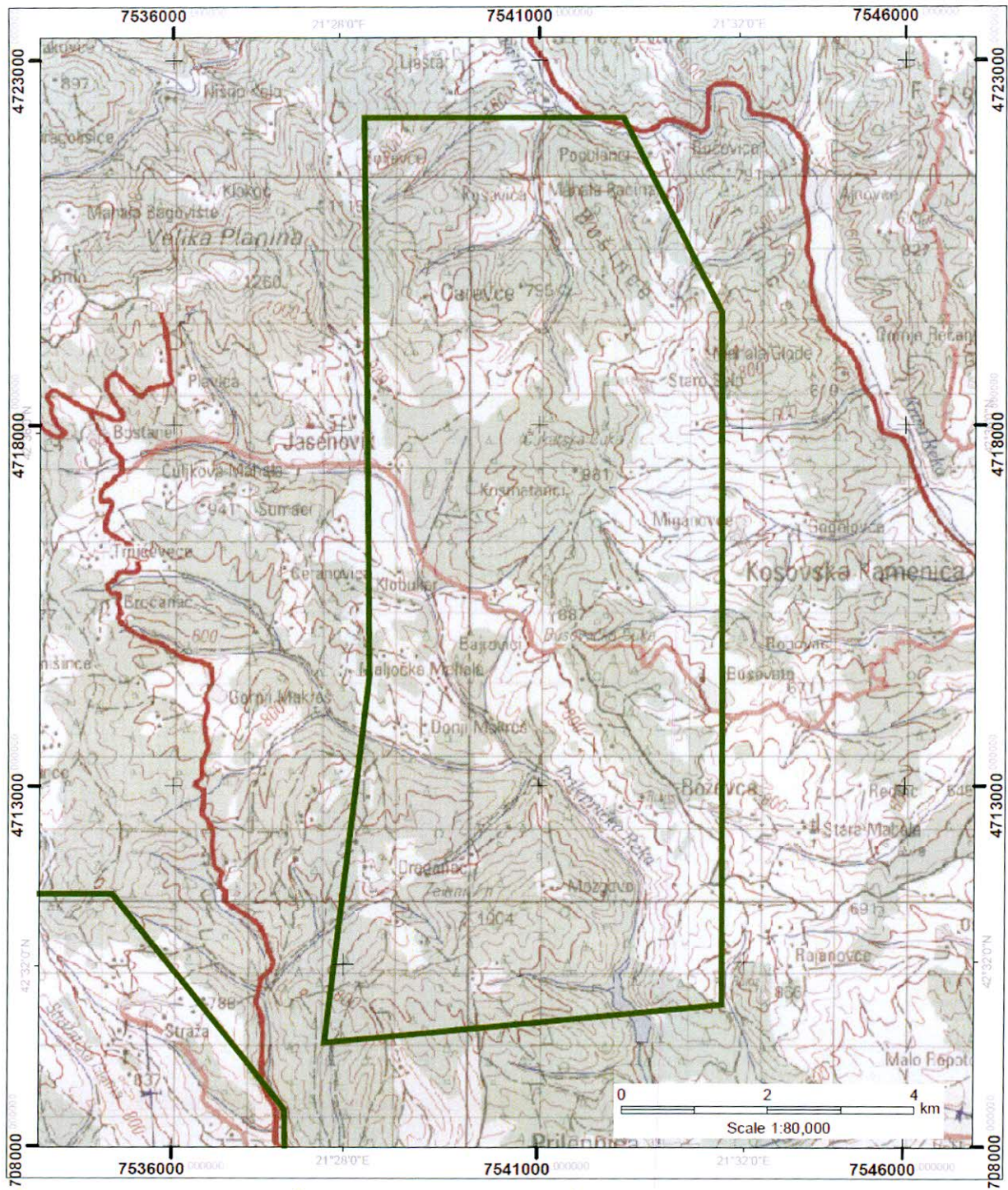


Fig. 1: Topographical map with Zone of Interest "Bushince – Bolec" (green line).

