

Mineral Site Passport

Brezovica

Commodity:

Chromium

Map Sheet:

K 34 - 66 B, K 34 - 67 A

Ownership:

Government

Status of Project:

Previously in production, today closed.

The mine has a well developed infrastructure including paved roads and power line access.



Regional Geology:

Highly prospective zone of the Brezovica Jurassic ophiolitic complex with known locations of chromite occurrences. Some of them are fully explored and some have been mined.

Mineralization / Type of Deposit:

Several ultramafic rock types, such as harzburgite, dunite and serpentinite with known chromite occurrences and minor contents of platinum group minerals. Small ore bodies of the liquid-magmatic type associated with dunite. There are two types of ores: impregnated ore with 25- 30% Cr_2O_3 and massive ore with 45% Cr_2O_3 . This association is known from similar deposits in Albania as well.

Extension of Mineral Occurrence:

The occurrences are spread over an area of approximately 10 km².

Resources:

In the Brezovica district some old chromite mines are found in ultrabasic rocks. The chromite deposits appear to be similar to the Deva deposit. An ore production of about 400,000 t has been recorded with an average Cr_2O_3 content of up to 43 %.

Past Production:

Past mining for Cr reported.

Mining Method:

Underground mine.

General Evaluation:

The geological setting is favourable. Further exploration work required.

Mineral Site Passport Brezovica

Additional Graphics:

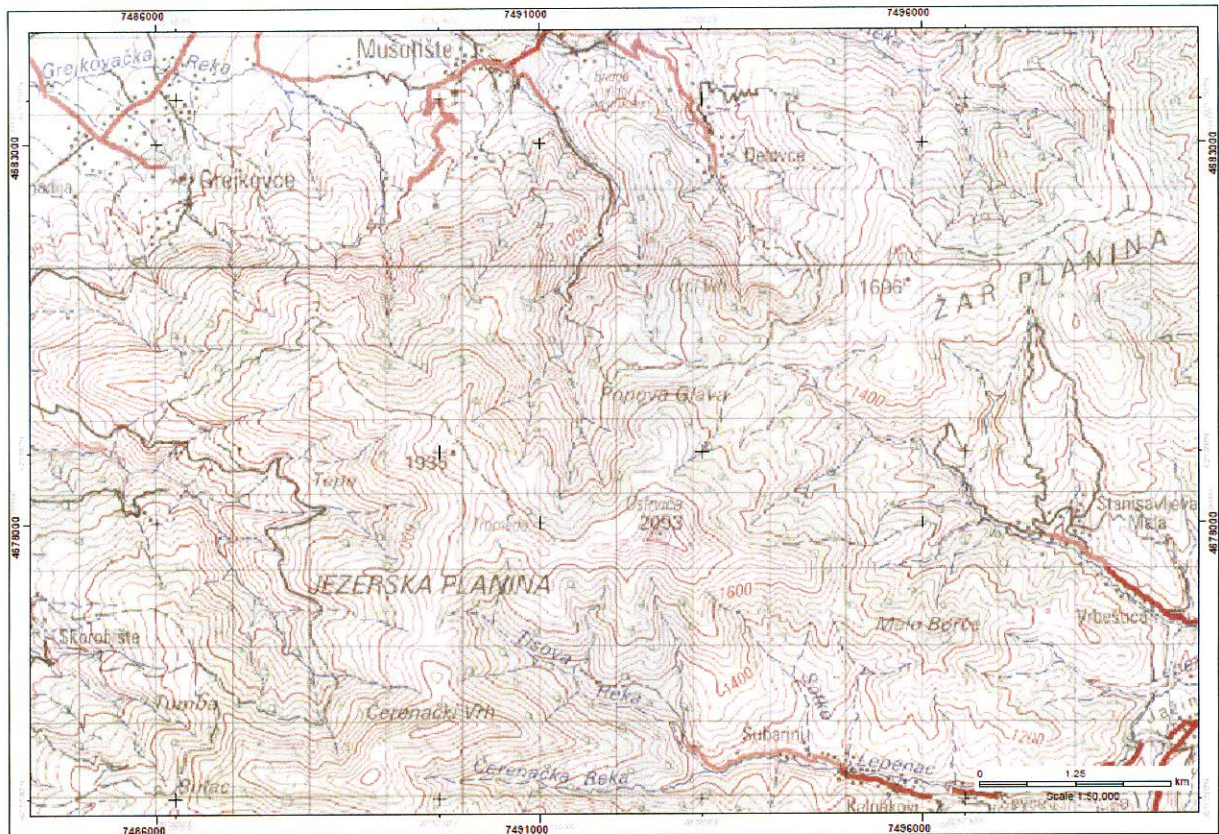


Fig. 1: Topographical Map of the Brezovica area

