

**Mineral Site Passport**

# Gllavica

**Commodity:**

Nickel

**Map Sheet:**

K 34 - 55 A

**Ownership:**

Newco Ferronikeli Complex L.L.C.

**Status of Project:**

In production, well explored by surface drilling.

**Infrastructure:**

Infrastructure includes paved roads, power line and railway connection.

**Regional Geology:**

Golesh Jurassic ophiolite complex

**Mineralization / Type of Deposit:**

The mineralization is a Ni-bearing lateritic deposit which developed on top of serpentinized ultramafic rocks during the Miocene. The ore is partly overlain by Pliocene argillite (up to 30 m thickness).

From top to bottom the deposit reveals the following zonation: Zone of red and yellow clay (thickness approx. 5 to 7 m), opal zone (thickness approx. 1 to 4 m), zone of nontronitized and serpentinized harzburgite (thickness approx. 4 to 23 m) and zone of non-altered peridotite.

**Extension of Mineral Occurrence:**

The thickness of the Ni-bearing ore ranges from a few meters up to approx. 30 m. Ni is bound to the clay minerals nontronite, garnierite and saponite.

**Resources:**

The resources amount to approx. 6.2 Mio. t of ore with 1.35 % Ni and 0.06% of Co. A new economic resource assessment carried out in 2008 indicates resources of approx. 11 Mio. t plus approx. 4.3 Mio. t of ore from occurrences east of Gllavica.

**Past Production:**

The deposit was discovered in the 1950ies. In 1963 an intensive exploration program including drilling was carried out. The first reserve estimation for Gllavica in 1967 showed 7 Mio. t of ore. Between 1967 and 1970 further drilling took place. In 1980 a new plant (Ni-smelter) was built in Glllogovac (Ferronickel) and started production in 1984.

**Mining Method:**

Open pit operation

**General Evaluation:**

This mine is in production and works economically.



**Mineral Site Passport Gllavica**

Additional Graphics:

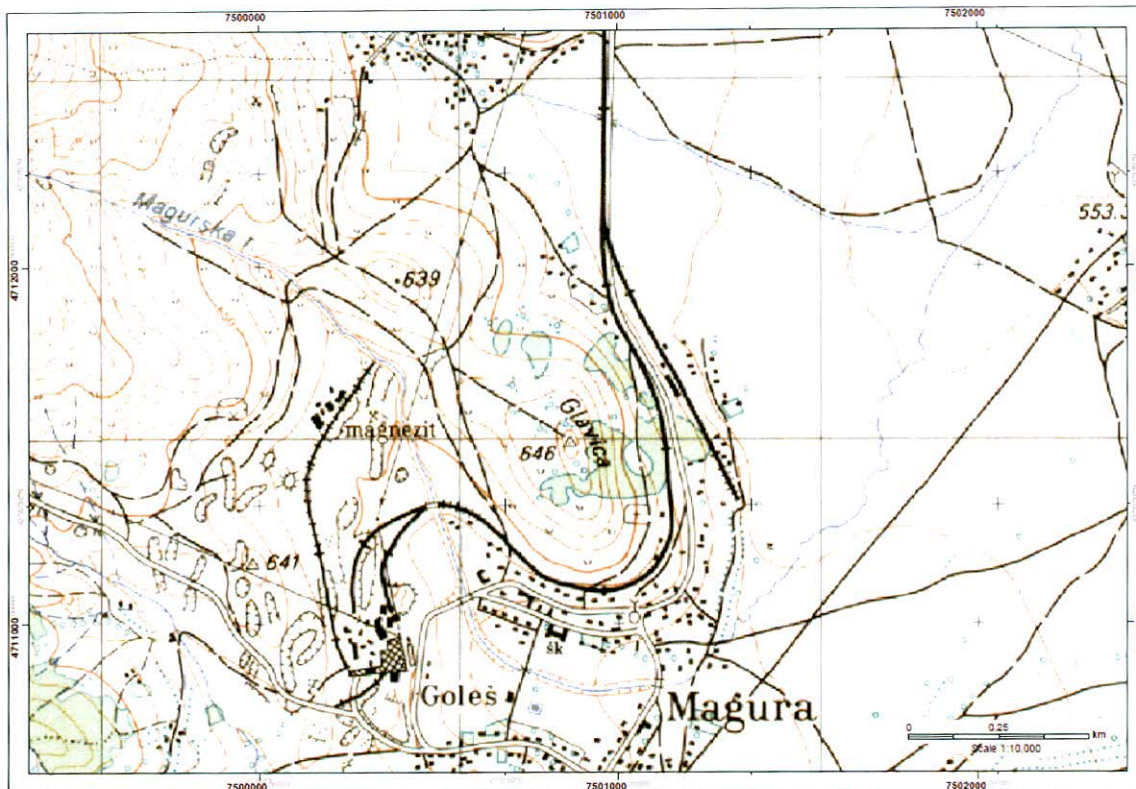


Fig. 1: Topographical Map of the Gllavica area.

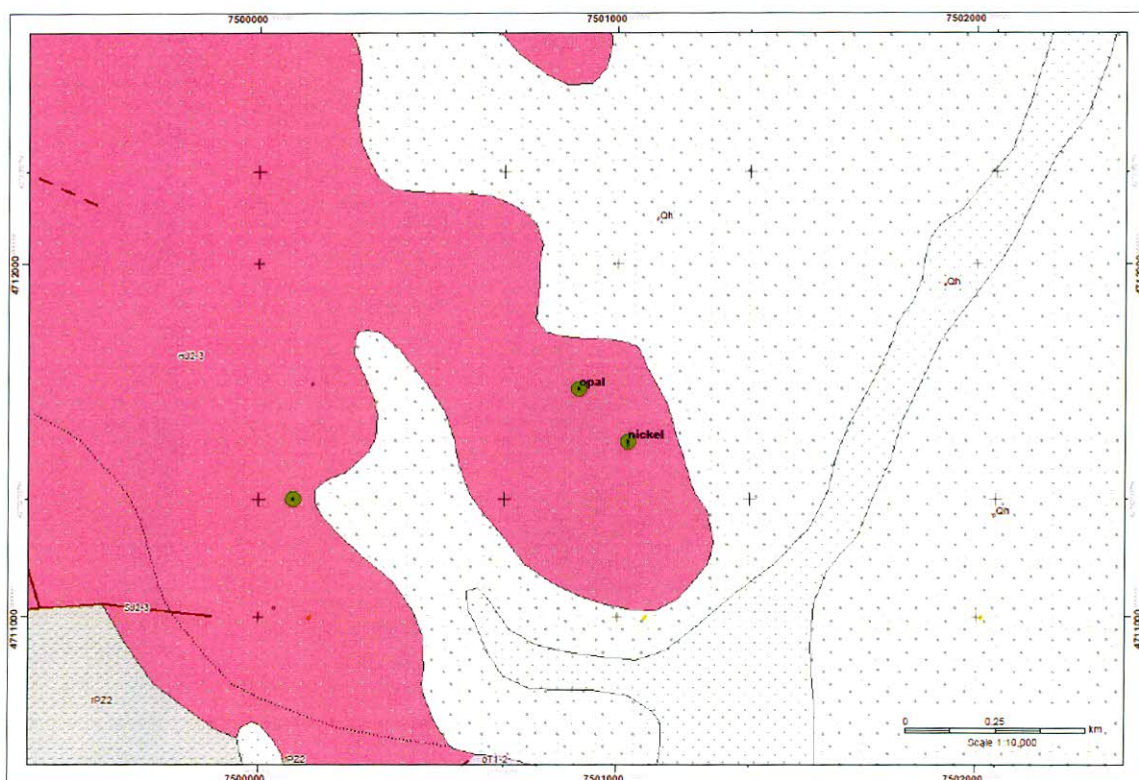


Fig. 2: Geological map with the mining area "Gllavica" showing the mineral occurrences.

**Mineral Site Passport Gllavica****References:**

1. BEAK CONSULTANTS GMBH: The Compilation of the Geoscientific Maps of Kosovo – Map of Minerals (2nd Update) and Metallogenic / Minerogenic Map of Kosovo – Final Report: Map Description. - Beak Consultants GmbH - Prishtinë, March 2008.
2. DUSHI, M.: Pasuritë Minerale të Kosovës. – Akademia e Shkencave dhe e Arteve e Kosovës, Libri 15, Libri 16, Prishtinë 2009, in Albanian (The Mineral Resources of Kosova, 2 vol., with English summary).
3. ESTAPIII - Development of a Mining Strategy – Energy Sector Technical Assistance Project III - Task 2: Assess Economic Potential – Descriptive Economic Assessment Database. – RWE Power International/RE GmbH and Beak Consultants GmbH, Prishtinë, 23.01.2007.
4. INKOS – Elaborati Gjeologjik për llogaritjen e rezervave të Nikelit në Vendburimin Gllavicë. – Instituti INKOS sh.a, Prishtinë 2008.
5. MEM - Strategy Plan for the Development of Kosovo 2007 – 2013 – Mining Sector.- Ministry of Energy and Mining PISG Kosovo, Prishtinë, October 2006.
6. MONTHEL J., VADALA P., LEISTEL J.M., COTTARD F., WITH THE COLLABORATION OF ILIC M., STRUMBERGER A., TOSOVIC R., STEPANOVIC A.: Mineral deposits and mining districts of Serbia. Compilation map and GIS databases. BRGM/RC-51448-FR, 67 p., 26 fig., 1 t., <http://giseurope.brgm.fr/>>. visited 13.06.2005, created 2002.
7. RADIČEVIĆ, P.: Mineralno-Sirovinska baza SAP Kosovo. – Booklet, Beograd, 1975, 156 p.
8. BEAK CONSULTANTS GMBH: Kosovo Mineral Resources Management Plan, 2009.
9. Kosova Logistik GmbH & Kartographie Huber sh.p.k.: Kosovo Mineral Resources Management Plan 2010.

