

Mineral Site Passport

Zhegovcë

Commodity:

Lead, Zinc

Map Sheet:

K 34 - 55

Ownership:

Government

Status of Project:

Under exploration

Infrastructure:

Next main road is approx. 2 km away. The next rail way station is located at approx. 16 km distance. The next access to the power grid is at approx. 8 km.

**Regional Geology:**

The regional geological unit is situated in the Central Vardar Subzone.

The rock sequence consists of:

- Quaternary alluvial sediments
- Paleocene – Neogene (Oligocene – Pliocene) volcanic rocks, mainly trachyte and latite
- Cretaceous sandstones, limestones, siltstones, conglomerates and breccias
- Jurassic Ophiolitic formation mainly as mélangé with olistoliths, serpentinite and basalt
- Paleozoic sericite schist

Mineralization / Type of Deposit:

Pb-Zn-Ag-Au hydrothermal fracture related sulfide veins and veinlets bound to Cenozoic volcanism in corresponding volcanic rocks and in altered Cretaceous carbonate and Jurassic ultramafic rocks.

Extension of Mineral Occurrence:

The surface of this area extends over more than 41 km².

Resources:

Not yet explored.

Past Production:

Occurrence of old slags and clinker dumps in different locations (river valleys). Evidence of Pb-Zn-Cu-Sb ore (old mining workings approximately 1.5 km SSW of Zhegovcë) and of Cu mineralization.

Mining Method:

Not yet established.

General Evaluation:

Mining indications from the past centuries (slag, ore float, small waste dumps); existing Pb-Zn (As, Mn, Cu, Sb) mineralization; geochemical anomalies of stream sediments and rocks like for Pb, Zn, Ag, Au and furthermore for As, Bi, Cd, Cu, Mo, Mn, Sb, Hg, Se, Te, Tl; alteration in host rocks (e.g.

Mineral Site Passport Zhegovcë

pyritization, silicification, propylitisation); geophysical anomalies with high-grade potassium-thorium-uranium radiation, high magnetic susceptibility and electrical conductivity.

Further exploration is required.

Additional Graphics:

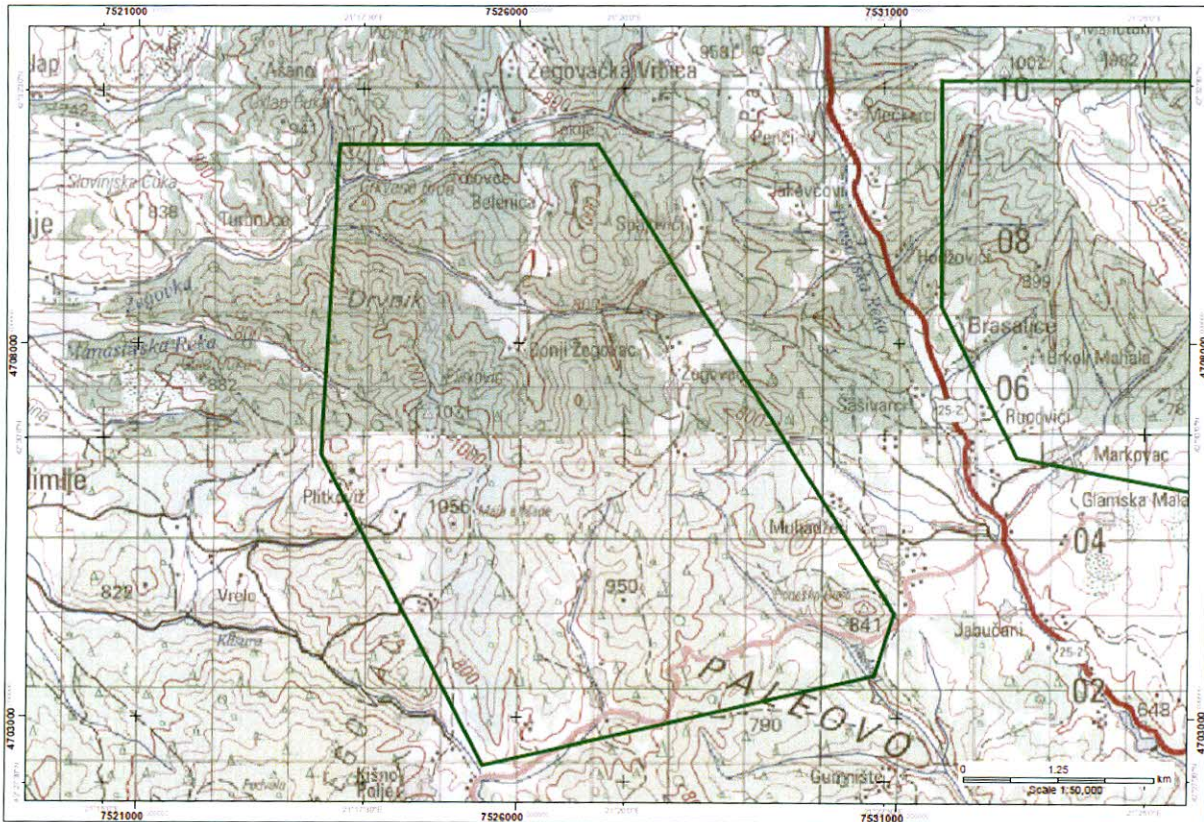


Fig. 1: Topographical map with Zone of Interest "Zhegovcë" (green contour).

