

Mineral Site Passport

Karača

Commodity:

Lead, Zinc, Gold, Silver,
Manganese

Map Sheet:

K 34 - 42

Ownership:

Government

Status of Project:

Under exploration

**Infrastructure:**

A paved road is intersecting the zone of interest. The next railway station is located in approx. 3 km. Access to power grid is in approx. 3 km.

Regional Geology:

The main regional geological Unit is the Mitrovicë/Samadrahë Cenozoic volcanic complex situated in the External Vardar Subzone.

The entire rock sequence consists of:

- Thin cover of Quaternary
- Pliocene sedimentary rocks (sandstone, clay)
- Miocene sedimentary rocks (conglomerate, sandstone, clay)
- Oligocene-Miocene pyroclastites and lavas
- Upper Cretaceous olistoliths in sandstones
- Jurassic ophiolite formation
- Triassic limestone
- Triassic volcanic-sedimentary series including basalt, marble/limestone, quartzite, schist
- Paleozoic schist with intercalations of quartzite and marble

Mineralization / Type of Deposit:

The mineralogy as known from the similar geological environment of Trepça mines is a massive, coarse-grained mixture of sulfides consisting of silver bearing galena, iron-rich sphalerite (marmatite), pyrite and pyrrhotine with minor amounts of arsenopyrite, jamesonite, boulangerite, bournonite, chalcopyrite and Pb-Sb-sulphosalts. Main gangue minerals are quartz, calcite, dolomite, Fe-Mn-carbonate (oligonite), siderite, rhodochrosite and barite.

Extension of Mineral Occurrence:

The area extends over 44 km².

Resources:

There are no sufficient data available although there are four early drill holes from 1958/1959 showing mineralization of galena, sphalerite, pyrite and cerussite. Stream sediment sampling detected several geochemical anomalies.

Mineral Site Passport Karača

Past Production:

Base metal-bearing slags found on fields in the Slakovčë river valley (eastern border of Zone of Interest) points to mining activities during the Middle Ages.

Mining Method:

Not defined.

General Evaluation:

Ancient mining activities as well as the preliminary results of exploration drilling in combination with geochemical anomalies indicate the potential for Pb-Zn-Ag-Au deposits.

Additional Graphics:

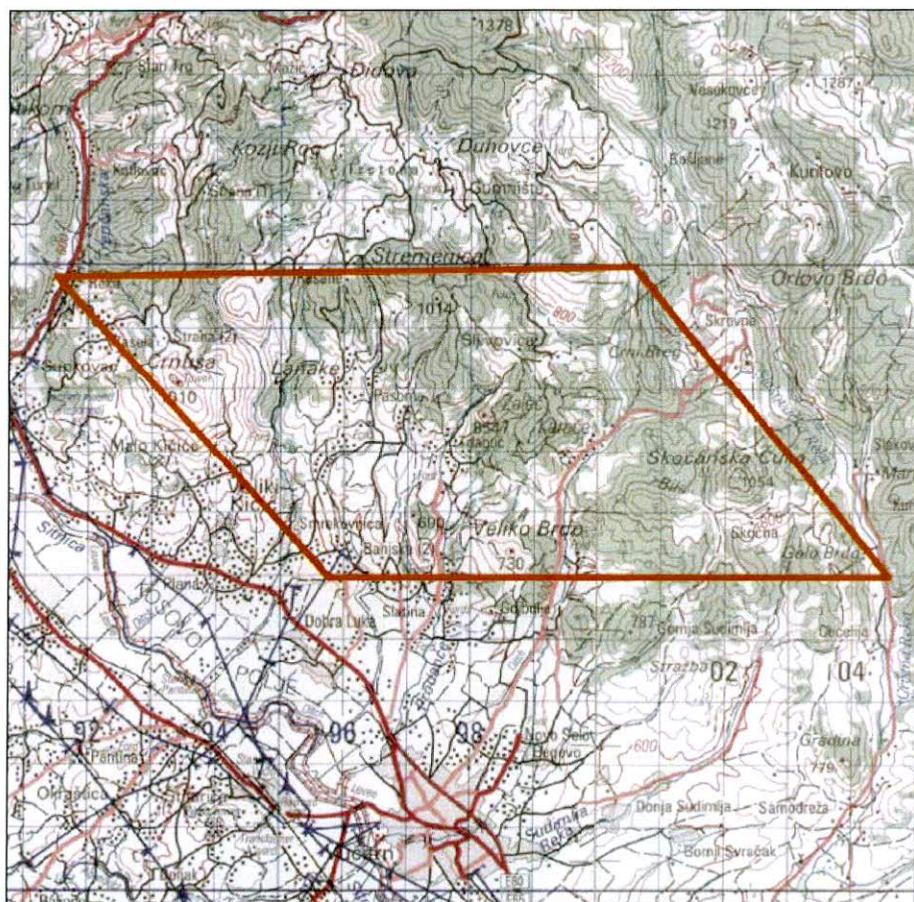


Fig. 1: Topographical map with the Zone of Interest "Karača" (brown line)

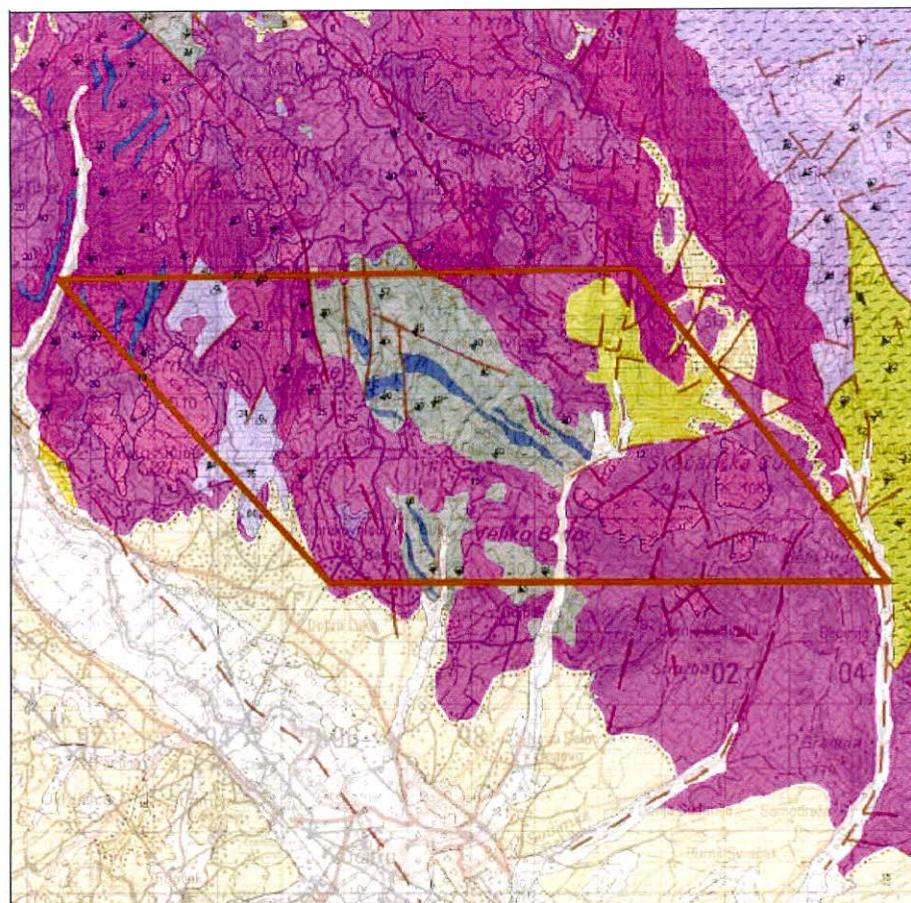
Mineral Site Passport Karača

Fig. 2: Geological map with the Zone of Interest "Karača" (brown line).

References:

1. BEAK CONSULTANTS GMBH: The Compilation of the Geoscientific Maps of Kosovo – Geological Map of Kosovo 1 : 100,000 – Description of the Map Compilation – Beak Consultants GmbH, Prishtinë, March 2006, 175 p.
2. BEAK CONSULTANTS GMBH: The Compilation of the Geoscientific Maps of Kosovo – Map of Minerals (2nd Update) and Metallogenic / Minerogenic Map of Kosovo – Final Report: Map Description. - Beak Consultants GmbH - Prishtinë, March 2008.
3. BEAK CONSULTANTS GMBH: Stream Sediment Sampling Area II – Mitrovica / Mitrovica - Samadrexhë / Samodreža, Prishtinë/Freiberg, 2008.
4. Dushi, M.: Pasuritë Minerale të Kosovës. – Akademia e Shkencave dhe e Arteve e Kosovës, Libri 15, Libri 16, Prishtinë 2009, in Albanian (The Mineral Resources of Kosova, 2 vol., with English summary).
5. JOINT AIRBORNE GEOSCIENCE CAPABILITY: Geophysics - Interpretation of Airborne Geophysical Data from Kosovo. – Report by M.-L. Airo, D. Beamish, et. al., Geological Survey of Finland/British Geological Survey, 07.12. 2007 including Airborne Geophysical Data Maps (Magnetics, Electromagnetics and K-Th-U-Radiation).
6. Isveštaj o istražnim radovima na Manganu u području Karača. – Zavod za Geološka, Geofizička i Rudarska Istraživanja, Beograd 1958. - ICMM Reg.No. 0138/A Karačë Mn.
7. BEAK CONSULTANTS GMBH: Kosovo Mineral Resources Management Plan, 2009.
8. Kosova Logistik GmbH & Kartographie Huber sh.p.k.: Kosovo Mineral Resources Management Plan 2010.

