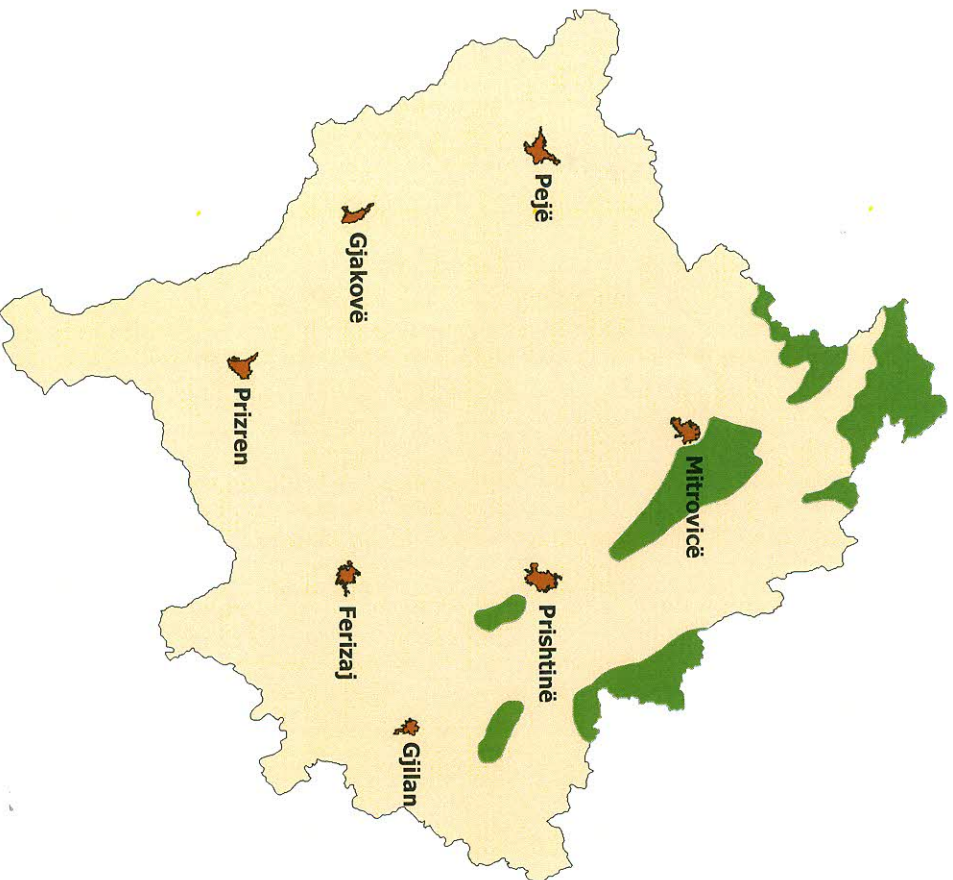


Zone of Interest for Lead and Zinc Mineralization



- Pb–Zn mineralizations known to occur besides the described occurrences, forming the “Zone of Interest for Pb-Zn Mineralization”:
1. Vllahia – Zijaç
 2. Gumnishte
 3. Karaça
 4. Bushince – Bolec
 5. Bresalcë
 6. Zhegovcë
 7. Debellde

Mineral Site Passport

Vllahi-Zijaç

Commodity:

Lead, Zinc

Map Sheet:

K 34 - 42

Ownership:

Government

Status of Project:

Under exploration.

Infrastructure:

The next paved road is at approx. 2 km distance. The next railway station is at approx. 2 km. Access to power grid is at approx. 3 km distance.

Regional Geology:

The regional geological unit is the Mitrovicë / Samadrexhë Cenozoic Volcanic Complex, situated in the External Vardar Subzone.

The geological formations are as follows:

- Alluvium - diluvium sediments of Quaternary
- Miocene volcanic rocks with latite, quartz - latite, andesite and pyroclastics
- Miocene sedimentary rocks with conglomerates, sandstone, clays, tuffs
- Ophiolitic formation of Jurassic age (peridotite, serpentinite)
- Volcanic - sedimentary rocks of the Triassic (meta-basalt, amphibolites, schist, meta-conglomerate, quartzite, marble)

Mineralization / Type of Deposit:

Propylitization, kaolinization, silicification and partly pyritization of Miocene volcanic rocks. A Cenozoic/Cretaceous lateritic weathering of Jurassic serpentinite and serpentinitized ultramafic rocks has to be examined.

Extension of Mineral Occurrence:

The surface of this area is more than 5 km².

Resources:

The only existing data are from drilling and a stream sediment sampling program. Indications for Pb, Zn, Ag, As and Hg exist.

Past Production:

Probably during Middle Ages old surface mining for Pb and Ag.

Mining Method:

Not yet planned.



Mineral Site Passport Vllahi-Zijaç

General Evaluation: The potential of the area is high.

Additional Graphics:

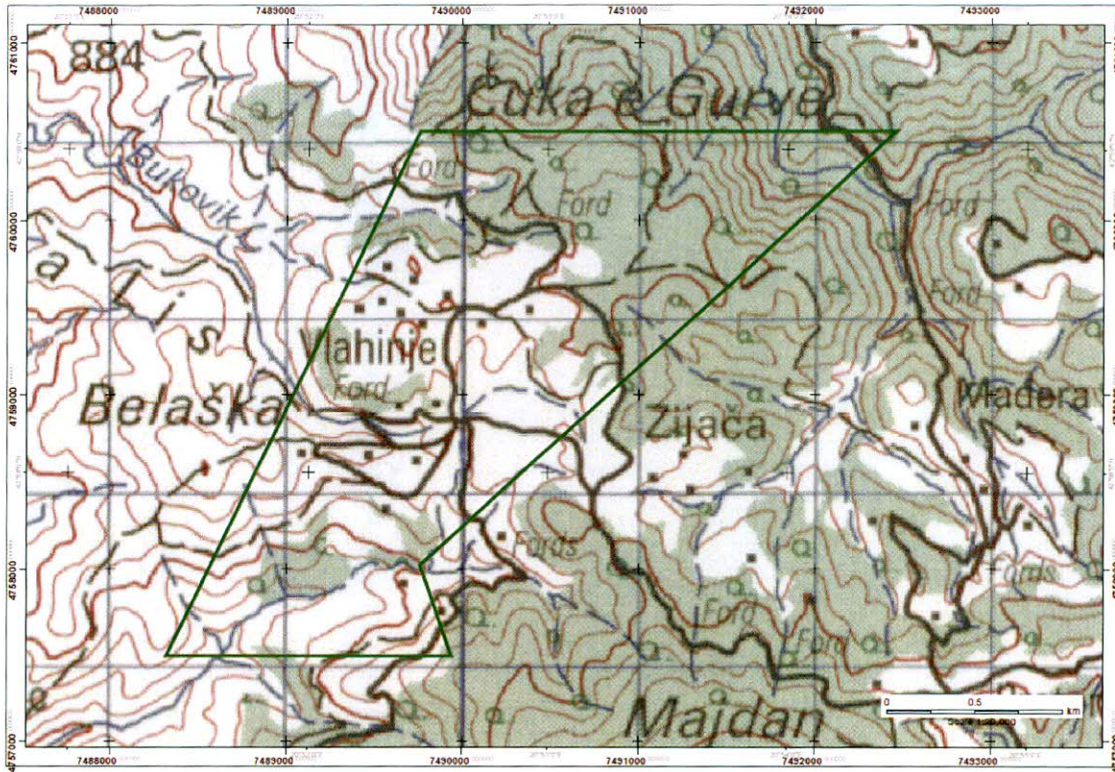


Fig. 1: Topographical Map with Zone of Interest "Vllahi-Zijaç" (green contour).

