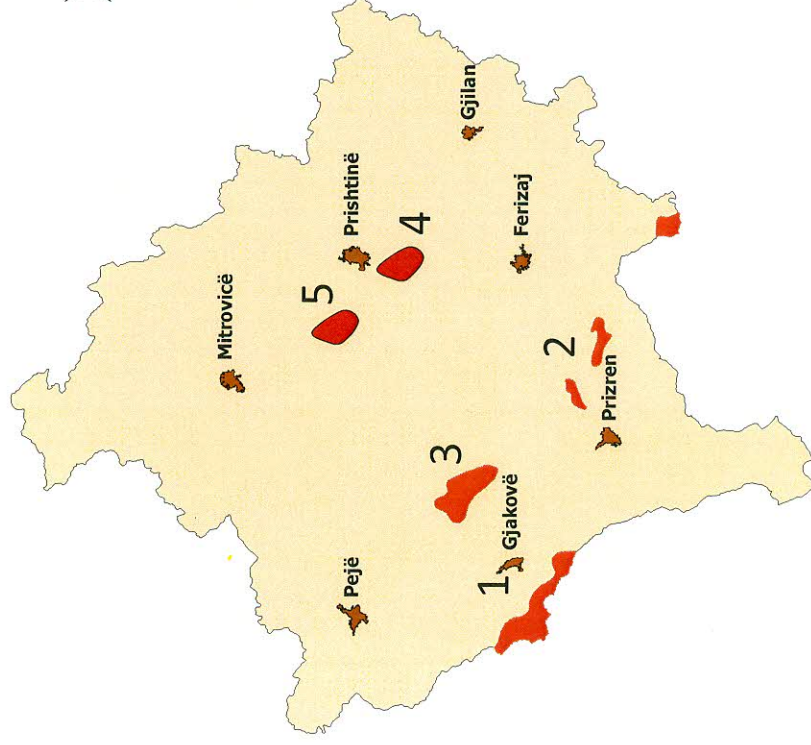


Chromium

➤ Locations of chromite deposits:

1. Deva region
2. Brezovica region
3. Rahoveci region
4. Goleshi region
5. Dobrosheci region



Mineral Site Passport

Deva

Commodity:

Chromium

Map Sheet:

K34 – 53 D and K 34 – 65 B

Ownership:

Government

Status of Project:

Previous mining, partly explored.

**Infrastructure:**

Next paved road is approx. 2 km away. Next power line access is at 2 km distance. 16 km is the distance to the next railway station. Location is 7 to 9 km SW of Gjakovë/Dakovica. The mine site is located in the south-western part of Kosovo at the border to Albania.

Regional Geology:

The deposits and occurrences of chromium are embedded in Jurassic ophiolites of the ultramafic complex of Gjakova.

Mineralization / Type of Deposit:

The ore appears disseminated or banded with magmatic layering and as lenses. They are hosted by dunites, harzburgites or peridotites. The ore bodies are up to a few hundred meters long and irregular in shape. Mineralogy is simple and mainly composed of chromite. From the Albanian part of the chromium district platinum group minerals are known.

Extension of Mineral Occurrence:

The area extends over more than 5 km².

Resources:

Indicated resources amounted to a total of 300,000 t (status 1978).

Mining was halted in 1982.

Past / Current Production:

Many old mine shafts and other workings occur all over the place. Until 1982 132,000 t of chromite ore at an average grade of 44 % have been mined. The most important ore fields were Devë/Deva and Babj Boks accompanied by smaller chromium occurrences in the neighborhood.

After the exploitation of chromium by the Germans, the “Deva holding company” was founded for mining purposes immediately after the Second World War. For about ten years, untreated raw chromium ore was trucked to Albania for processing.

Later a processing facility (concentrator) was built to produce two kinds of chromium concentrates with 48 % and 53 % Cr₂O₃. Chromium ore imports from Albania ranged from 30,000 to 50,000 t per year until the plant was closed in 1991 (Site Report from R. Longstaff, “Deva” Chrome Mine, 26.10.2000).

Mining Method:

Underground Mine

Mineral Site Passport Deva

General Evaluation:

Further exploration is required for the delineation of the remaining potential.

Additional Graphics:

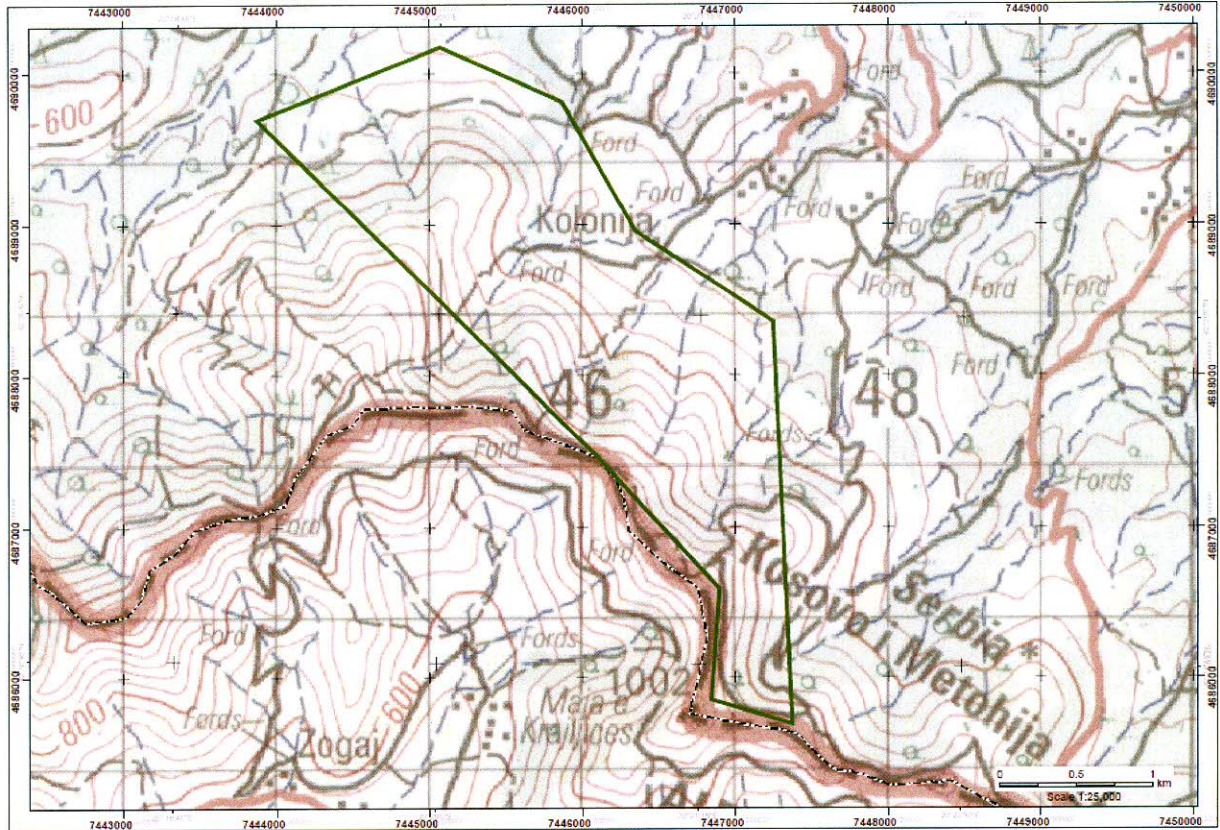


Fig. 1: Topographical map with Zone of Interest "Deva" (green line) near the border to Albania.

