

Mineral Site Passport

Gumnishta

Commodity:

Lead, Zinc

Map Sheet:

K 34 - 42

Ownership:

Government

Status of Project:

Under exploration.

Infrastructure:

A paved road intersects the Zone of Interest. The next railway station is approx. 2 km away. Next power grid is at about 1 km distance.

Regional Geology:

The major regional geological unit is the Mitrovicë / Samadrexhë Cenozoic volcanic complex, situated in External Vardar Subzone.

The rock sequence consists of:

- Quaternary alluvial and deluvial sediments
- Miocene quartz-latite, latite and andesite lavas, subvolcanics and corresponding pyroclastic rocks
- Miocene sedimentary rocks like conglomerates, sandstones, clays, tuffs, tuffites: "volcanic base"
- Jurassic ophiolite formation (peridotites, basalts, serpentinites, serpentinised ultramafic rocks, chert)
- Triassic volcano-sedimentary rocks with metabasalts, metaconglomerates, metasandstones, amphibolites, schists and marbles ("Trepça series")
- Palaeozoic sericite-chlorite schists

Mineralization / Type of Deposit:

Pb-Zn-Ag-Au hydrothermal sulfide veins and veinlets associated with Cenozoic andesite-latite-trachyte volcanism. Carbonate replacement ore bodies with Pb, Zn, Ag, Au, Mn, Bi, Sb and Cu in Triassic marbles/limestones. Sulfide veinlets in altered Palaeozoic schists (pyritisation, kaolinitisation and propylitisation).

Extension of Mineral Occurrence:

The surface of this Zone of Interest is 29 km².

Resources:

Drilling carried out and in the 1960ies and in 2007 detected mineralization. Stream sediment sampling program yielded 4 samples with grades ranging from 0.41 to 1.38 ppm Au. In addition, the following elements also show higher metal concentrations: Pb, Zn, Ag, As, Hg, Cd, Sb, Bi, Se and Mn.

Past Production:

Probably in Roman times and Middle Ages surface mining of Pb and Ag was carried out in the Gumnishta Zone.



Mineral Site Passport Gumnishta

Mining Method:

Not yet planned.

General Evaluation:

According to the Kosova Mineral Resources Management Plan it is recommended to continue with the geological research activities in the Zone of Interest.

Additional Graphics:

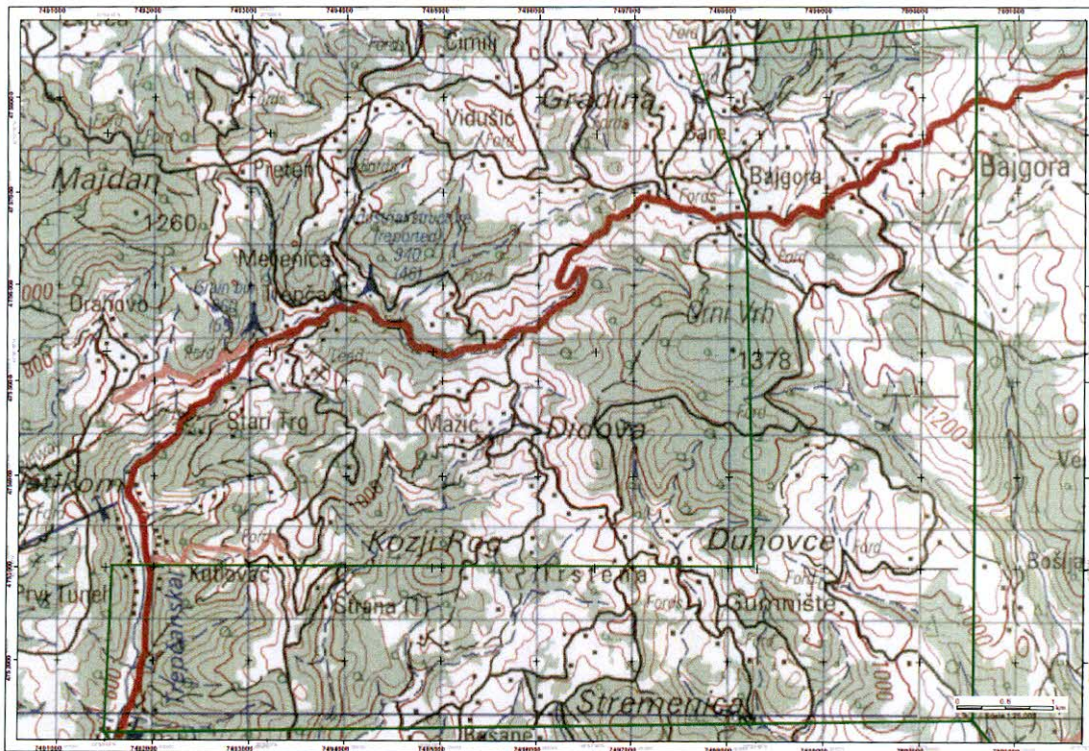


Fig. 1: Topographical map with Zone of Interest "Gumnishta" (green line).

Mineral Site Passport Gumnishta

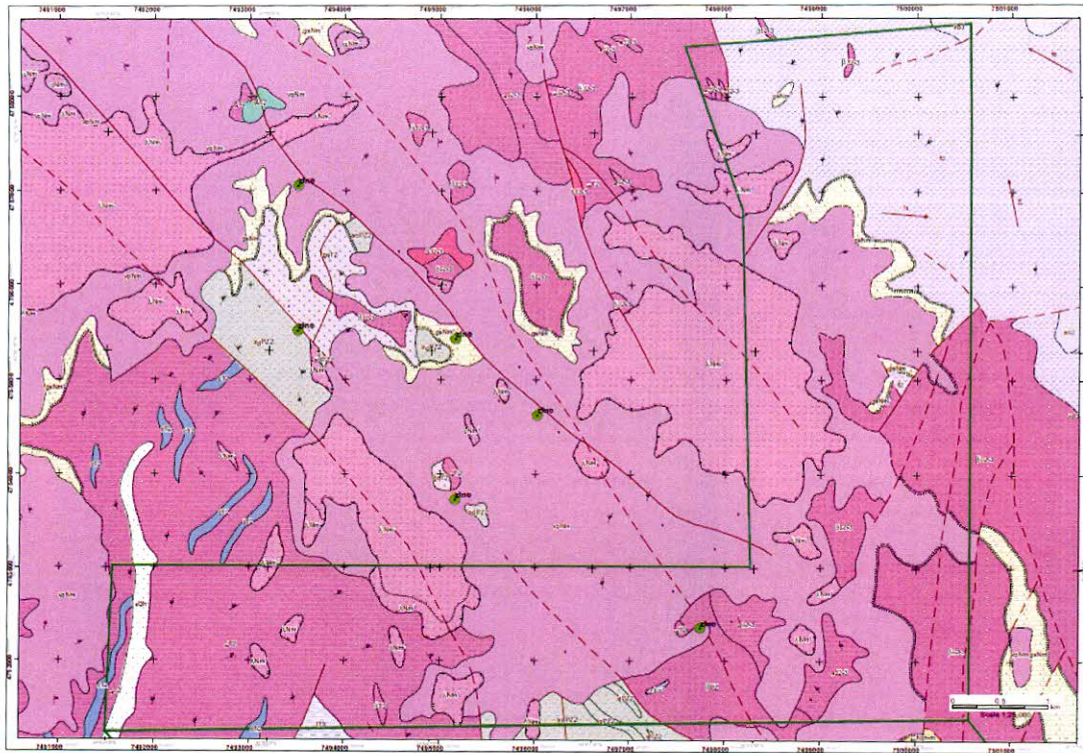


Fig. 2: Geological map with Zone of Interest "Gumnishta" (green line).

Mineral Site Passport Gumnishta

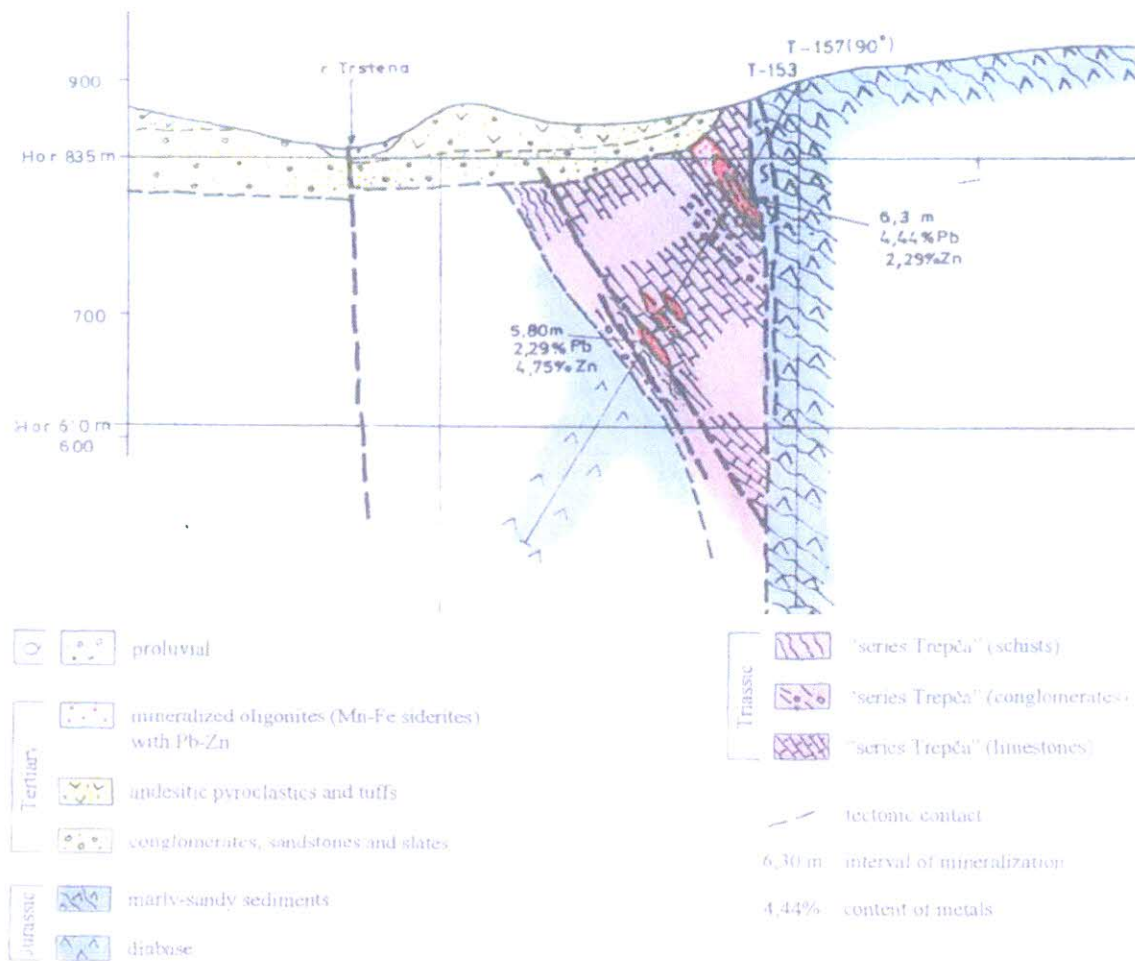


Fig. 3: Geological cross - section of a mineralization near Terstena

