

Mineral Site Passport

Bushince-Bolec

Commodity:

Lead, Zinc

Map Sheet:

K 34 - 55B, K34 - 56A

Ownership:

Government

Status of Project:

Under exploration

Infrastructure:

The next road is approx. 4 km away. The next railway station is located at approx. 30 km. Next access to power grid is approx. 3 km away.

Regional Geology:

The regional geological units are the Artana (Novo Brdo) Metamorphic Unit and the Kamenicë Cenozoic Basin. They are situated in the Internal Vardar Subzone and the Dardanian Massif.

The rock sequences are:

- Quaternary alluvial and diluvial sediments as thin cover
- Pliocene sand and clay in a small basin
- Oligocene amphibole-pyroxene andesite as well as volcanic breccias and agglomerates
- Oligocene sandstones, tuffites, tuffs, breccias, mudstone and magnesite bearing layers
- Paleozoic sericite and quartzite schists with intercalations of marble, quartzites and amphibolites, and gneiss-granites.

Mineralization / Type of Deposit:

Potential Pb-Zn-Ag-Au hydrothermal sulphide veins and veinlets genetically associated with Cenozoic potassium-rich volcanism in volcanic rocks in the central part of Zone of Interest and in metamorphic limestone-schist series in the southeastern part of Zone of Interest.

Extension of Mineral Occurrence:

The surface of this area is approximately 60 km².

Resources:

At the end of 1950s and in the 1960s, southwest of the village Bolec a manganese occurrence (mainly psilomelan) was investigated by drilling, trenching and underground workings. The ore body was recorded approx. 250 m along strike and to a depth of at least 100 m. The thickness of the ore was determined to be 10 m. Analyses have given the following results: Up to 40 % Mn, 3.9 % Pb and up to 6.3 % Zn. A stream sediment sampling program in 2006/2007 confirmed anomalies for these elements.

Past Production:

Only exploration work in the 1950s and 1960s are recorded.

Mining Method:

Underground mining was envisaged.



Mineral Site Passport Bushince - Bushince Bolec

Additional Graphics:

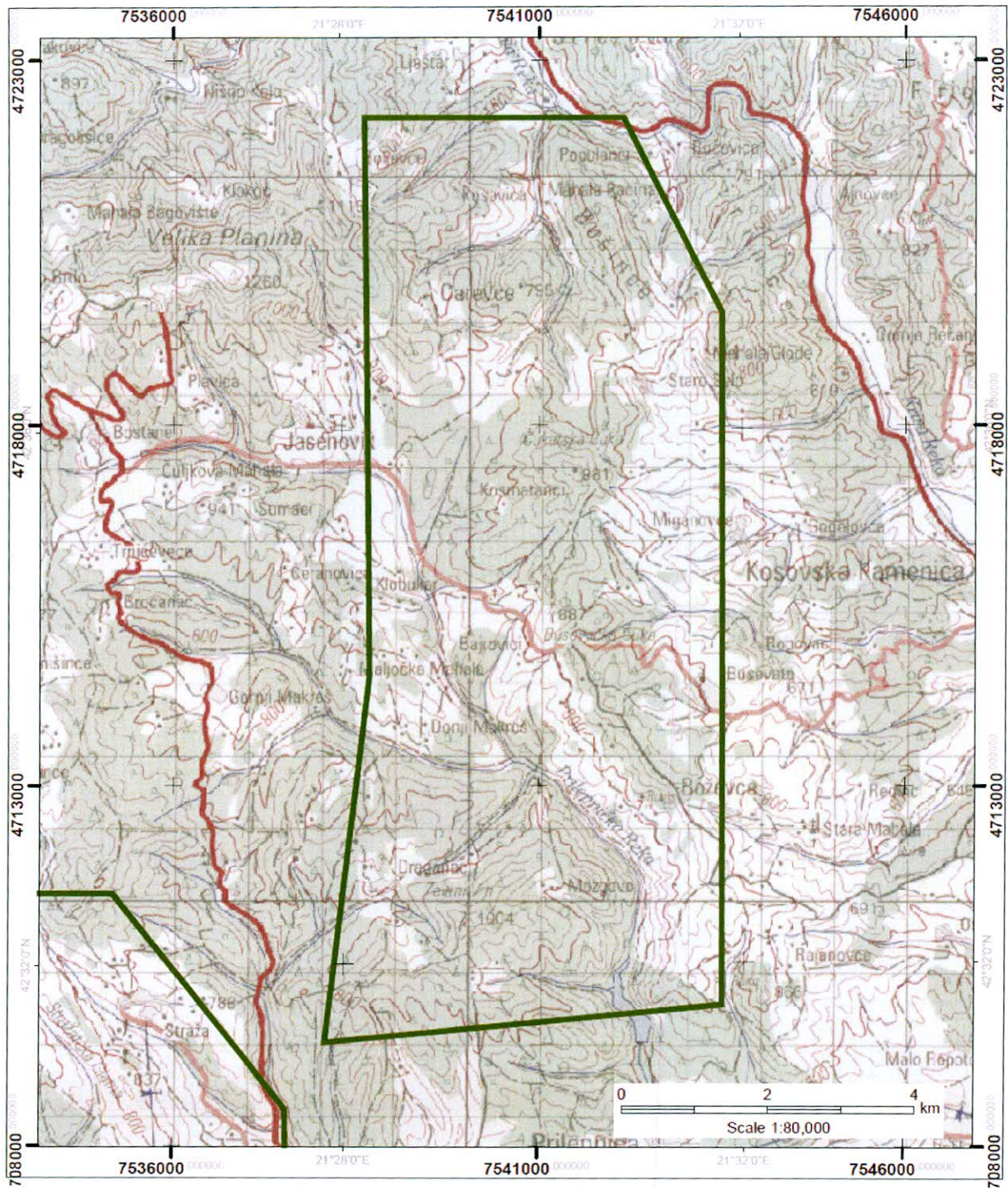


Fig. 1: Topographical map with Zone of Interest "Bushince – Bolec" (green line).

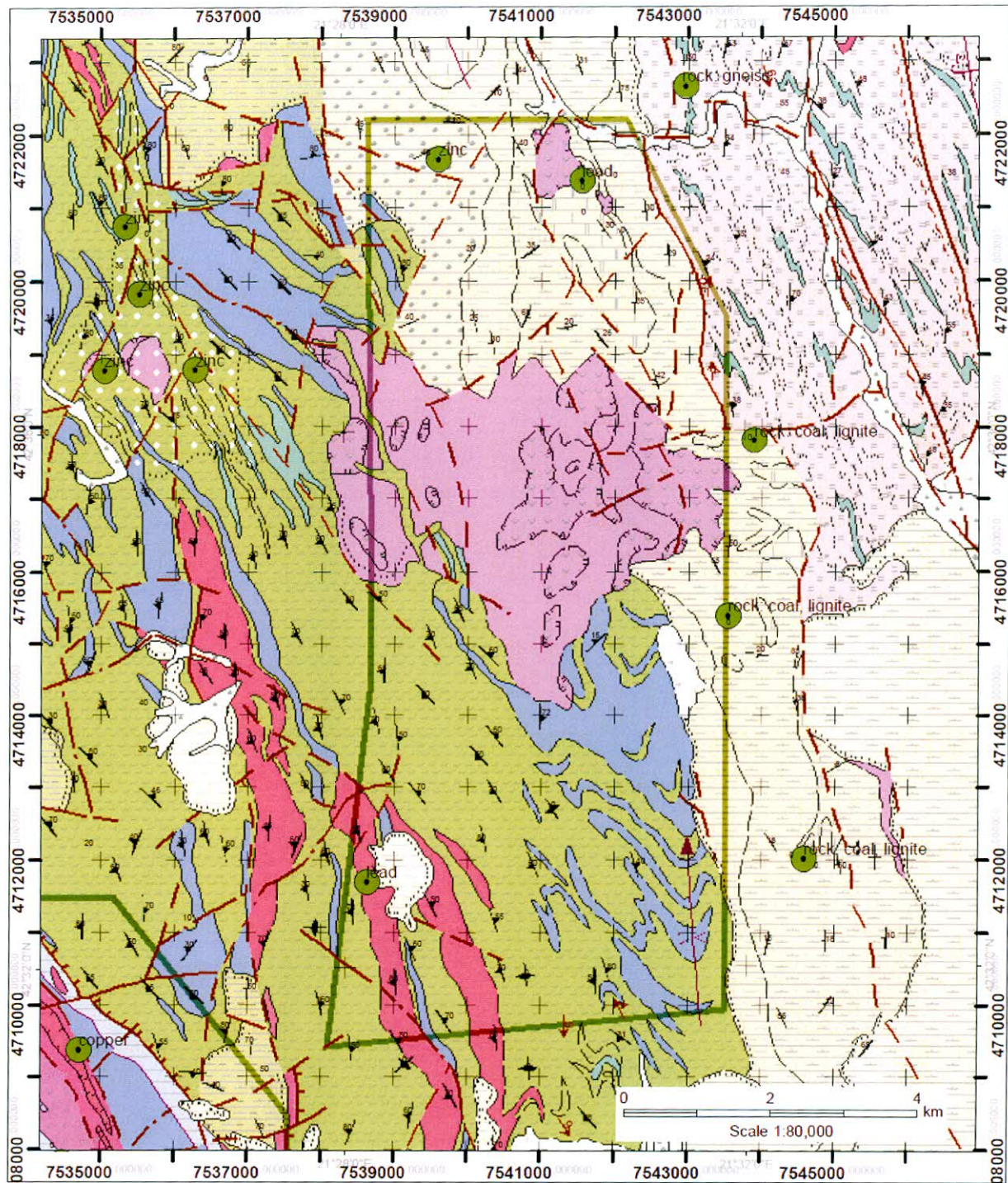
Mineral Site Passport Bushince - Bushince Bolec

Fig. 2: Geological map with Zone of Interest "Bushince – Bolec" including mineral occurrences

General Evaluation:

Prospectivity is indicated by remnants of mining activities from the past centuries (slags, ore float, small mine dumps). There are also signs for Pb-Zn (As, Mn, Cu, Sb) mineralization and geochemical anomalies of stream sediments and whole rock samples. The host rocks underwent alteration such as pyritisation, silicification and propylitization.

The whole Zone of Interest is prospective.

Mineral Site Passport Bushince - Bushince Bolec**References:**

1. BEAK CONSULTANTS GMBH: The Compilation of the Geoscientific Maps of Kosovo – Geological Map of Kosovo 1 : 100,000 – Description of the Map Compilation – Beak Consultants GmbH, Prishtinë, March 2006, 175 p.
2. BEAK CONSULTANTS GMBH: The Compilation of the Geoscientific Maps of Kosovo – Map of Minerals (2nd Update) and Metallogenic / Minerogenic Map of Kosovo – Final Report: Map Description. - Beak Consultants GmbH - Prishtinë, March 2008.
3. BEAK CONSULTANTS GMBH: Stream Sediment Sampling Area I - Kizhniçë / Kišnica - Artanë / Novo Brdo, Prishtinë/Freiberg, 18.02.2007.
4. Dushi, M.: Pasuritë Minerale të Kosovës. – Akademia e Shkencave dhe e Arteve e Kosovës, Libri 15, Libri 16, Prishtinë 2009, in Albanian (The Mineral Resources of Kosova, 2 vol., with English summary).
5. Elaborato reg. straž. Mineralnih sirovina Skopsko Crne Gore. – ICMM Reg.-No. 0234/I.
6. Izveštaj o prospekci na teritoriji AKMO. – ICMM Reg.-No. 0221/I.
7. Izveštaj o rezultatima rudarskih istražnih radova na pojavi mangana u selu Boljevcu. – ICMM Reg.-No. 0275/A
8. JOINT AIRBORNE GEOSCIENCE CAPABILITY: Geophysics - Interpretation of Airborne Geophysical Data from Kosovo. – Report by M.-L. Airo, D. Beamish, et. al., Geological Survey of Finland/British Geological Survey, 07.12. 2007 including Airborne Geophysical Data Maps (Magnetics, Electromagnetics and K-Th-U-Radiation).
9. BEAK CONSULTANTS GMBH: Kosovo Mineral Resources Management Plan, 2009.
10. Kosova Logistik GmbH & Kartographie Huber sh.p.k.: Kosovo Mineral Resources Management Plan 2010.

Mineral Site Passport Bushince - Bushince Bolec

For further details see the data base at the ICMM.



**Independent Commission for Mines and Minerals (ICMM)
Komisioni i Pavarur për Minera dhe Minerale
Nezavisna Komisija za Rudnike i Minerale**

Armend Daci Street No. 1

1000 Pristina, Kosovo

Tel.: +381 38 240 252

Fax: +381 38 245 844

e-mail: ICMM@kosovo-mining.org

<http://www.kosovo-mining.org>

**Support to ICMM to develop the Geochemical Survey in Kosovo
EU GEOS
EuropeAid/128027/D/SER/KOS**



A project implemented
by the Contractor

abc-associated business
consultants gmbh /
Brenk Systemplanung GmbH
c/o abc-associated business
consultants gmbh
Dreilindenstr. 84
45128 Essen
Germany
Tel: +49 201 125289 80
Fax: +49 201 125289 81

An EU funded Project
managed by the European
Commission Liaison Office

Delegation of the European
Commission Liaison Office
Kosova St. 1
10000 Pristina
Kosovo
Tel: +381 38 51 31 504
Fax: +381 38 51 31 307

The European Commission is the EU's executive body.

"The European Union is made up of 27 Member States who have decided to gradually link together their know-how, resources and destinies. Together, during a period of enlargement of 50 years, they have built a zone of stability, democracy and sustainable development whilst maintaining cultural diversity, tolerance and individual freedoms. The European Union is committed to sharing its achievements and its values with countries and peoples beyond its borders".

"This publication has been produced with the assistance of the European Union. The contents of this publication are the sole responsibility of abc-associated business consultants gmbh / Brenk Systemplanung GmbH and can in no way be taken to reflect the views of the European Union."