

Mineral Site Passport

Gllavica

Commodity:

Nickel

Map Sheet:

K 34 - 55 A

Ownership:

Newco Ferronikeli Complex L.L.C.

Status of Project:

In production, well explored by surface drilling.

Infrastructure:

Infrastructure includes paved roads, power line and railway connection.

Regional Geology:

Golesh Jurassic ophiolite complex

Mineralization / Type of Deposit:

The mineralization is a Ni-bearing lateritic deposit which developed on top of serpentinized ultramafic rocks during the Miocene. The ore is partly overlain by Pliocene argillite (up to 30 m thickness).

From top to bottom the deposit reveals the following zonation: Zone of red and yellow clay (thickness approx. 5 to 7 m), opal zone (thickness approx. 1 to 4 m), zone of nontronitized and serpentinized harzburgite (thickness approx. 4 to 23 m) and zone of non-altered peridotite.

Extension of Mineral Occurrence:

The thickness of the Ni-bearing ore ranges from a few meters up to approx. 30 m. Ni is bound to the clay minerals nontronite, garnierite and saponite.

Resources:

The resources amount to approx. 6.2 Mio. t of ore with 1.35 % Ni and 0.06% of Co. A new economic resource assessment carried out in 2008 indicates resources of approx. 11 Mio. t plus approx. 4.3 Mio. t of ore from occurrences east of Gllavica.

Past Production:

The deposit was discovered in the 1950ies. In 1963 an intensive exploration program including drilling was carried out. The first reserve estimation for Gllavica in 1967 showed 7 Mio. t of ore. Between 1967 and 1970 further drilling took place. In 1980 a new plant (Ni-smelter) was built in Glllogovac (Ferronickel) and started production in 1984.

Mining Method:

Open pit operation

General Evaluation:

This mine is in production and works economically.



Mineral Site Passport Gllavica

Additional Graphics:

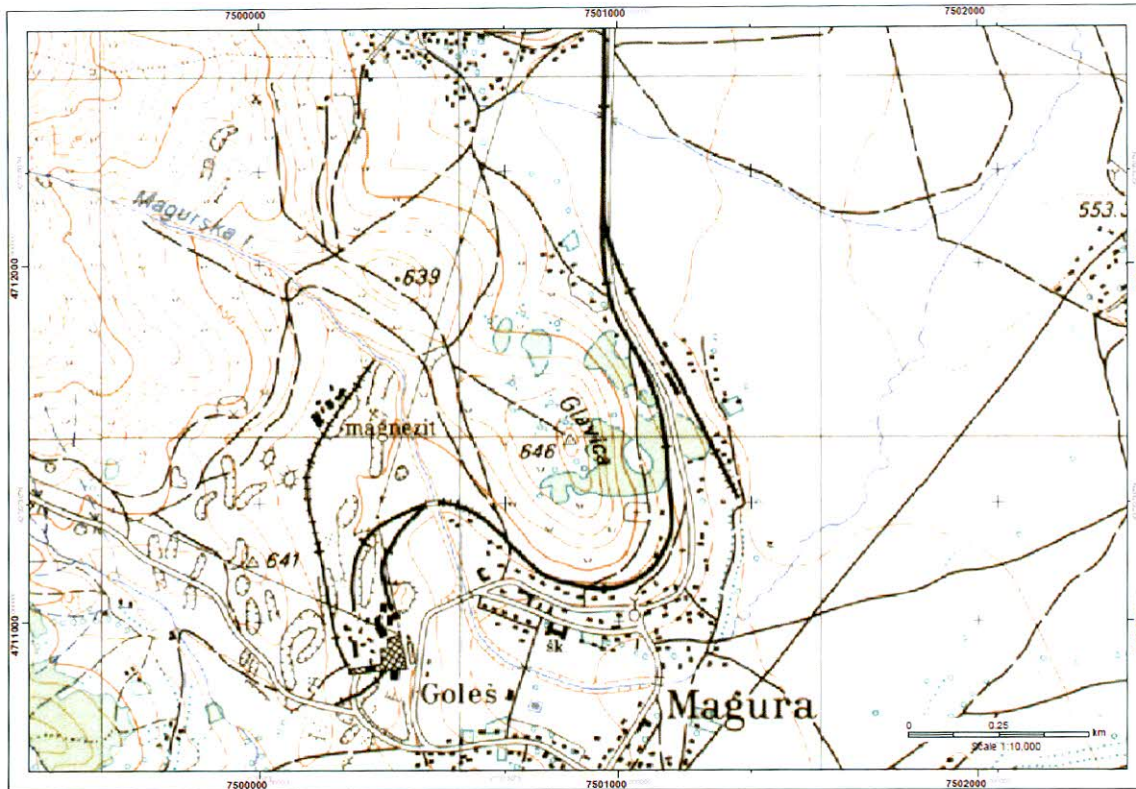


Fig. 1: Topographical Map of the Gllavica area.

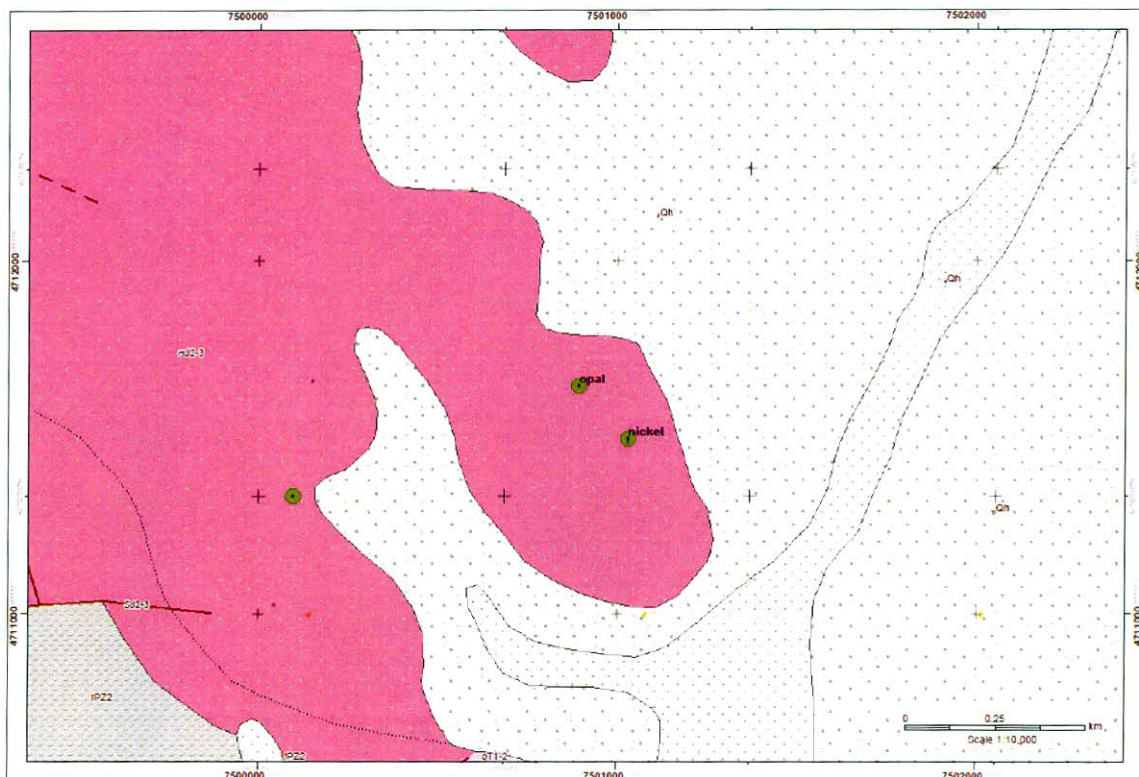


Fig. 2: Geological map with the mining area "Gllavica" showing the mineral occurrences.

Mineral Site Passport Gllavica**References:**

1. BEAK CONSULTANTS GMBH: The Compilation of the Geoscientific Maps of Kosovo – Map of Minerals (2nd Update) and Metallogenic / Minerogenic Map of Kosovo – Final Report: Map Description. - Beak Consultants GmbH - Prishtinë, March 2008.
2. DUSHI, M.: Pasuritë Minerale të Kosovës. – Akademia e Shkencave dhe e Arteve e Kosovës, Libri 15, Libri 16, Prishtinë 2009, in Albanian (The Mineral Resources of Kosova, 2 vol., with English summary).
3. ESTAPIII - Development of a Mining Strategy – Energy Sector Technical Assistance Project III - Task 2: Assess Economic Potential – Descriptive Economic Assessment Database. – RWE Power International/RE GmbH and Beak Consultants GmbH, Prishtinë, 23.01.2007.
4. INKOS – Elaborati Gjeologjik për llogaritjen e rezervave të Nikelit në Vendburimin Gllavicë. – Instituti INKOS sh.a, Prishtinë 2008.
5. MEM - Strategy Plan for the Development of Kosovo 2007 – 2013 – Mining Sector.- Ministry of Energy and Mining PISG Kosovo, Prishtinë, October 2006.
6. MONTHEL J., VADALA P., LEISTEL J.M., COTTARD F., WITH THE COLLABORATION OF ILIC M., STRUMBERGER A., TOSOVIC R., STEPANOVIC A.: Mineral deposits and mining districts of Serbia. Compilation map and GIS databases. BRGM/RC-51448-FR, 67 p., 26 fig., 1 t., <http://giseurope.brgm.fr/>>. visited 13.06.2005, created 2002.
7. RADIČEVIĆ, P.: Mineralno-Sirovinska baza SAP Kosovo. – Booklet, Beograd, 1975, 156 p.
8. BEAK CONSULTANTS GMBH: Kosovo Mineral Resources Management Plan, 2009.
9. Kosova Logistik GmbH & Kartographie Huber sh.p.k.: Kosovo Mineral Resources Management Plan 2010.

Mineral Site Passport Gllavica

For further details see the data base at the ICMM.



**Independent Commission for Mines and Minerals (ICMM)
Komisioni i Pavarur për Minera dhe Minerale
Nezavisna Komisija za Rudnike i Minerale**

Armend Daci Street No. 1

1000 Pristina, Kosovo

Tel.: +381 38 240 252

Fax: +381 38 245 844

e-mail: ICMM@kosovo-mining.org

<http://www.kosovo-mining.org>

**Support to ICMM to develop the Geochemical Survey in Kosovo
EU GEOS
EuropeAid/128027/D/SER/KOS**



A project implemented
by the Contractor

abc-associated business
consultants gmbh /
Brenk Systemplanung GmbH
c/o abc-associated business
consultants gmbh
Dreilindenstr. 84
45128 Essen
Germany
Tel: +49 201 125289 80
Fax: +49 201 125289 81

An EU funded Project
managed by the European
Commission Liaison Office

Delegation of the European
Commission Liaison Office
Kosova St. 1
10000 Pristina
Kosovo
Tel: +381 38 51 31 504
Fax: +381 38 51 31 307

The European Commission is the EU's executive body.

"The European Union is made up of 27 Member States who have decided to gradually link together their know-how, resources and destinies. Together, during a period of enlargement of 50 years, they have built a zone of stability, democracy and sustainable development whilst maintaining cultural diversity, tolerance and individual freedoms. The European Union is committed to sharing its achievements and its values with countries and peoples beyond its borders".

"This publication has been produced with the assistance of the European Union. The contents of this publication are the sole responsibility of abc-associated business consultants gmbh / Brenk Systemplanung GmbH and can in no way be taken to reflect the views of the European Union."