

Mineral Site Passport

Bresalc

Commodity:

Lead, Zinc

Map Sheet:

K 34 - 55

Ownership:

Government

Status of Project:

Under exploration

Infrastructure:

The Project is sometimes also called Koretishes. The next paved road and power grid access is approximately at 1 km distance. The next railway station is about 23 km away.

Regional Geology:

The geological units are the Koznicë Jurassic Ophiolitic Complex and the Vardar Lower Cretaceous Flysch Trough, situated in the Central Vardar Subzone.

The rock sequences are:

- Minor Quaternary alluvial sediments
- Pliocene gravel, sand, sandy clay in very small basins
- Jurassic ophiolite formation (limestone, gabbro, basalt, serpentinite and minor granitoides)
- Palaeozoic sericite and quartzite schists with intercalations of marble, quartzite and alkaligranite

Mineralization / Type of Deposit:

Potential of Pb-Zn-Mn-Ag-Au bearing hydrothermal fracture-related sulphide veins and veinlets, genetically associated with Cenozoic potassium-rich volcanism in altered Jurassic ultramafic rocks (listvenite). Cu-Pb-Zn sulphides disseminated along the hydrothermal zones and in volcano-sedimentary ores within the Jurassic ophiolite complex.

Extension of Mineral Occurrence:

The surface area of this Zone of Interest is approx. 27 km².

Resources:

Indications for a deposit consist of existing Pb-Zn (As, Mn, Cu, Sb) mineralization, geochemical anomalies in stream sediments and rock chips (Pb, Zn, Ag, Au, furthermore As, Bi, Cd, Cu, Mo, Mn, Sb, Hg, Se, Te, Tl). Other indications are alterations of host rocks such as pyritization, silicification and propylitization.

Past Production:

Remnants of former mining activities from the last centuries such as slags, ore float and small dumps.

Mining Method:

Not yet planned.



Mineral Site Passport Bresalc

General Evaluation:

Prospective is the whole Zone of Interest. Important features inside of Zone of Interest are main tectonic structures, fracture control of veins, lithological features and existing mineral occurrences of Pb, Zn, Mn and Cu. Further exploration is required.

Additional Graphics:

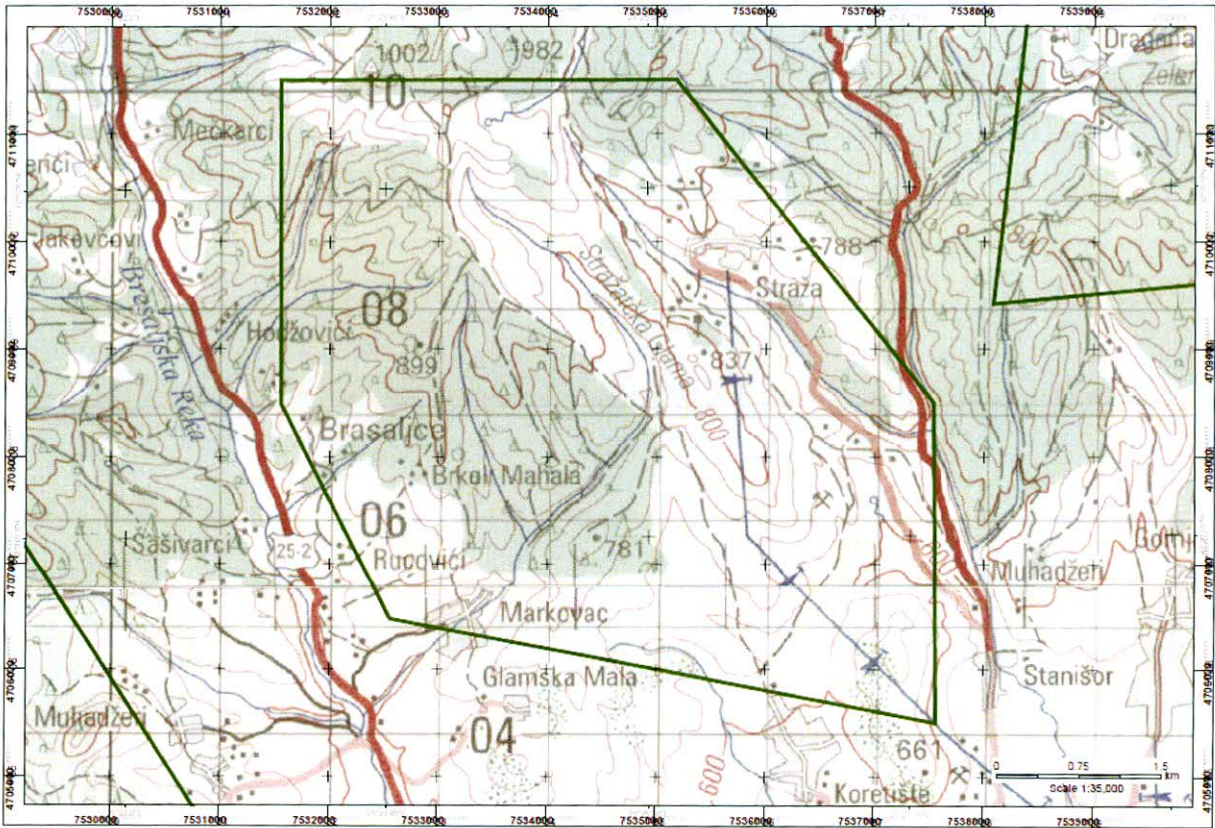


Fig. 1: Topographical Map with Zone of Interest "Bresalc" (green line).

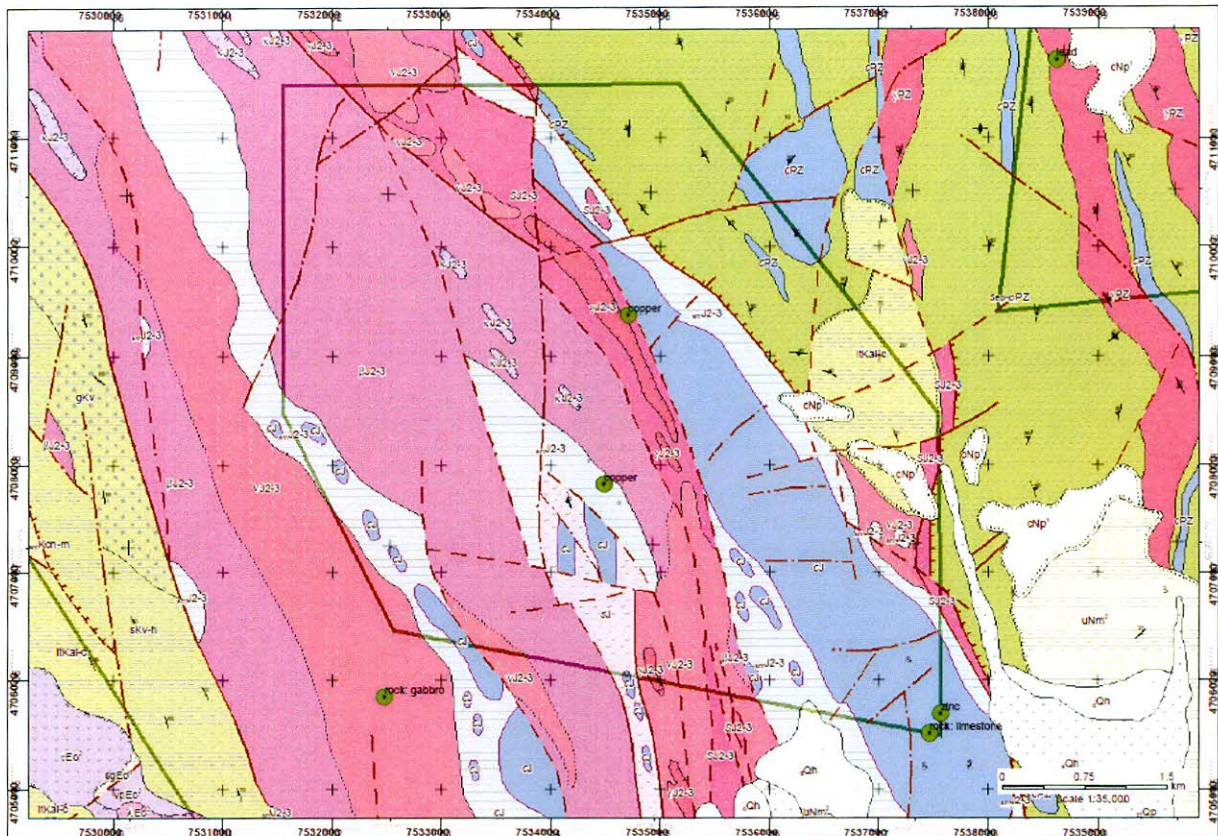
Mineral Site Passport Bresalc

Fig. 2: Digital geological map with Zone of interest "Bresalc" including the main mineralization localities.

References:

1. BEAK CONSULTANTS GMBH: The Compilation of the Geoscientific Maps of Kosovo – Geological Map of Kosovo 1 : 100,000 – Description of the Map Compilation – Beak Consultants GmbH, Prishtinë, March 2006, 175 p.
2. BEAK CONSULTANTS GMBH: The Compilation of the Geoscientific Maps of Kosovo – Map of Minerals (2nd Update) and Metallogenic / Minerogenic Map of Kosovo – Final Report: Map Description. - Beak Consultants GmbH - Prishtinë, March 2008.
3. JOINT AIRBORNE GEOSCIENCE CAPABILITY: Geophysics - Interpretation of Airborne Geophysical Data from Kosovo. – Report by M.-L. Airo, D. Beamish, et. al., Geological Survey of Finland/British Geological Survey, 07.12. 2007 including Airborne Geophysical Data Maps (Magnetics, Electromagnetics and K-Th-U-Radiation).
4. BEAK CONSULTANTS GMBH: Kosovo Mineral Resources Management Plan, 2009.
5. Kosova Logistik GmbH & Kartographie Huber sh.p.k.: Kosovo Mineral Resources Management Plan 2010.

Mineral Site Passport Bresalc

For further details see the data base at the ICMM.



**Independent Commission for Mines and Minerals (ICMM)
Komisioni i Pavarur për Minera dhe Minerale
Nezavisna Komisija za Rudnike i Minerale**

Armend Daci Street No. 1

1000 Pristina, Kosovo

Tel.: +381 38 240 252

Fax: +381 38 245 844

e-mail: ICMM@kosovo-mining.org

<http://www.kosovo-mining.org>

**Support to ICMM to develop the Geochemical Survey in Kosovo
EU GEOS
EuropeAid/128027/D/SER/KOS**



A project implemented
by the Contractor

abc-associated business
consultants gmbh /
Brenk Systemplanung GmbH
c/o abc-associated business
consultants gmbh
Dreilindenstr. 84
45128 Essen
Germany
Tel:+49 201 125289 80
Fax:+49 201 125289 81

An EU funded Project
managed by the European
Commission Liaison Office

Delegation of the European
Commission Liaison Office
Kosova St. 1
10000 Pristina
Kosovo
Tel: +381 38 51 31 504
Fax: +381 38 51 31 307

The European Commission is the EU's executive body.

"The European Union is made up of 27 Member States who have decided to gradually link together their know-how, resources and destinies. Together, during a period of enlargement of 50 years, they have built a zone of stability, democracy and sustainable development whilst maintaining cultural diversity, tolerance and individual freedoms. The European Union is committed to sharing its achievements and its values with countries and peoples beyond its borders".

"This publication has been produced with the assistance of the European Union. The contents of this publication are the sole responsibility of abc-associated business consultants gmbh / Brenk Systemplanung GmbH and can in no way be taken to reflect the views of the European Union."