

Mineral Site Passport

Karača

Commodity:

Lead, Zinc, Gold, Silver,
Manganese

Map Sheet:

K 34 - 42

Ownership:

Government

Status of Project:

Under exploration



Infrastructure:

A paved road is intersecting the zone of interest. The next railway station is located in approx. 3 km. Access to power grid is in approx. 3 km.

Regional Geology:

The main regional geological Unit is the Mitrovicë/Samadraxhë Cenozoic volcanic complex situated in the External Vardar Subzone.

The entire rock sequence consists of:

- Thin cover of Quaternary
- Pliocene sedimentary rocks (sandstone, clay)
- Miocene sedimentary rocks (conglomerate, sandstone, clay)
- Oligocene-Miocene pyroclastites and lavas
- Upper Cretaceous olistoliths in sandstones
- Jurassic ophiolite formation
- Triassic limestone
- Triassic volcanic-sedimentary series including basalt, marble/limestone, quartzite, schist
- Paleozoic schist with intercalations of quartzite and marble

Mineralization / Type of Deposit:

The mineralogy as known from the similar geological environment of Trepça mines is a massive, coarse-grained mixture of sulfides consisting of silver bearing galena, iron-rich sphalerite (marmatite), pyrite and pyrrhotine with minor amounts of arsenopyrite, jamesonite, boulangerite, bournonite, chalcopyrite and Pb-Sb-sulphosalts. Main gangue minerals are quartz, calcite, dolomite, Fe-Mn-carbonate (oligonite), siderite, rhodochrosite and barite.

Extension of Mineral Occurrence:

The area extends over 44 km².

Resources:

There are no sufficient data available although there are four early drill holes from 1958/1959 showing mineralization of galena, sphalerite, pyrite and cerussite. Stream sediment sampling detected several geochemical anomalies.

Mineral Site Passport Karača

Past Production:

Base metal-bearing slags found on fields in the Slakovčë river valley (eastern border of Zone of Interest) points to mining activities during the Middle Ages.

Mining Method:

Not defined.

General Evaluation:

Ancient mining activities as well as the preliminary results of exploration drilling in combination with geochemical anomalies indicate the potential for Pb-Zn-Ag-Au deposits.

Additional Graphics:

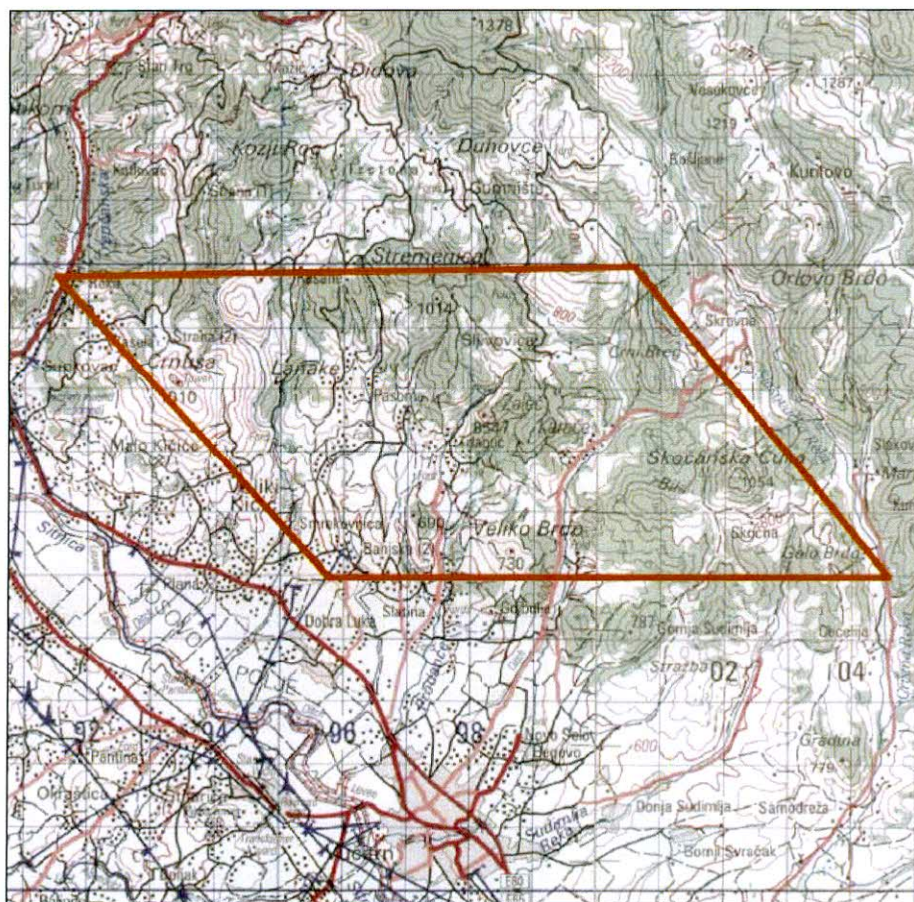


Fig. 1: Topographical map with the Zone of Interest "Karača" (brown line)

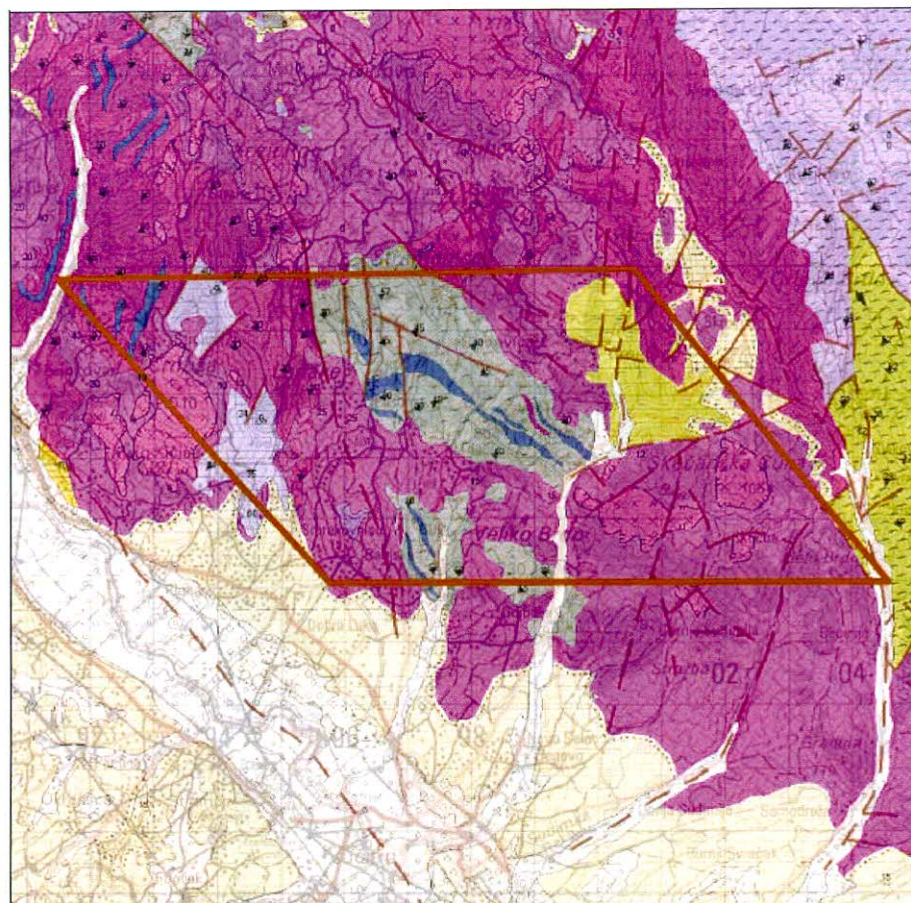
Mineral Site Passport Karača

Fig. 2: Geological map with the Zone of Interest "Karača" (brown line).

References:

1. BEAK CONSULTANTS GMBH: The Compilation of the Geoscientific Maps of Kosovo – Geological Map of Kosovo 1 : 100,000 – Description of the Map Compilation – Beak Consultants GmbH, Prishtinë, March 2006, 175 p.
2. BEAK CONSULTANTS GMBH: The Compilation of the Geoscientific Maps of Kosovo – Map of Minerals (2nd Update) and Metallogenic / Minerogenic Map of Kosovo – Final Report: Map Description. - Beak Consultants GmbH - Prishtinë, March 2008.
3. BEAK CONSULTANTS GMBH: Stream Sediment Sampling Area II – Mitrovica / Mitrovica - Samadrexhë / Samodreža, Prishtinë/Freiberg, 2008.
4. Dushi, M.: Pasuritë Minerale të Kosovës. – Akademia e Shkencave dhe e Arteve e Kosovës, Libri 15, Libri 16, Prishtinë 2009, in Albanian (The Mineral Resources of Kosova, 2 vol., with English summary).
5. JOINT AIRBORNE GEOSCIENCE CAPABILITY: Geophysics - Interpretation of Airborne Geophysical Data from Kosovo. – Report by M.-L. Airo, D. Beamish, et. al., Geological Survey of Finland/British Geological Survey, 07.12. 2007 including Airborne Geophysical Data Maps (Magnetics, Electromagnetics and K-Th-U-Radiation).
6. Isveštaj o istražnim radovima na Manganu u području Karača. – Zavod za Geološka, Geofizička i Rudarska Istraživanja, Beograd 1958. - ICMM Reg.No. 0138/A Karačë Mn.
7. BEAK CONSULTANTS GMBH: Kosovo Mineral Resources Management Plan, 2009.
8. Kosova Logistik GmbH & Kartographie Huber sh.p.k.: Kosovo Mineral Resources Management Plan 2010.

Mineral Site Passport Karaça

For further details see the data base at the ICMM.



**Independent Commission for Mines and Minerals (ICMM)
Komisioni i Pavarur për Minera dhe Minerale
Nezavisna Komisija za Rudnike i Minerale**

Armend Daci Street No. 1

1000 Pristina, Kosovo

Tel.: +381 38 240 252

Fax: +381 38 245 844

e-mail: ICMM@kosovo-mining.org

<http://www.kosovo-mining.org>

**Support to ICMM to develop the Geochemical Survey in Kosovo
EU GEOS
EuropeAid/128027/D/SER/KOS**



A project implemented
by the Contractor

abc-associated business
consultants gmbh /
Brenk Systemplanung GmbH
c/o abc-associated business
consultants gmbh
Dreilindenstr. 84
45128 Essen
Germany
Tel: +49 201 125289 80
Fax: +49 201 125289 81

This project is funded
by the European
Commission Liaison Office

Delegation of the European
Commission Liaison Office
Kosova St. 1
10000 Pristina
Kosovo
Tel: +381 38 51 31 504
Fax: +381 38 51 31 307

The European Commission is the EU's executive body.

"The European Union is made up of 27 Member States who have decided to gradually link together their know-how, resources and destinies. Together, during a period of enlargement of 50 years, they have built a zone of stability, democracy and sustainable development whilst maintaining cultural diversity, tolerance and individual freedoms. The European Union is committed to sharing its achievements and its values with countries and peoples beyond its borders".

"This publication has been produced with the assistance of the European Union. The contents of this publication are the sole responsibility of abc-associated business consultants gmbh / Brenk Systemplanung GmbH and can in no way be taken to reflect the views of the European Union."