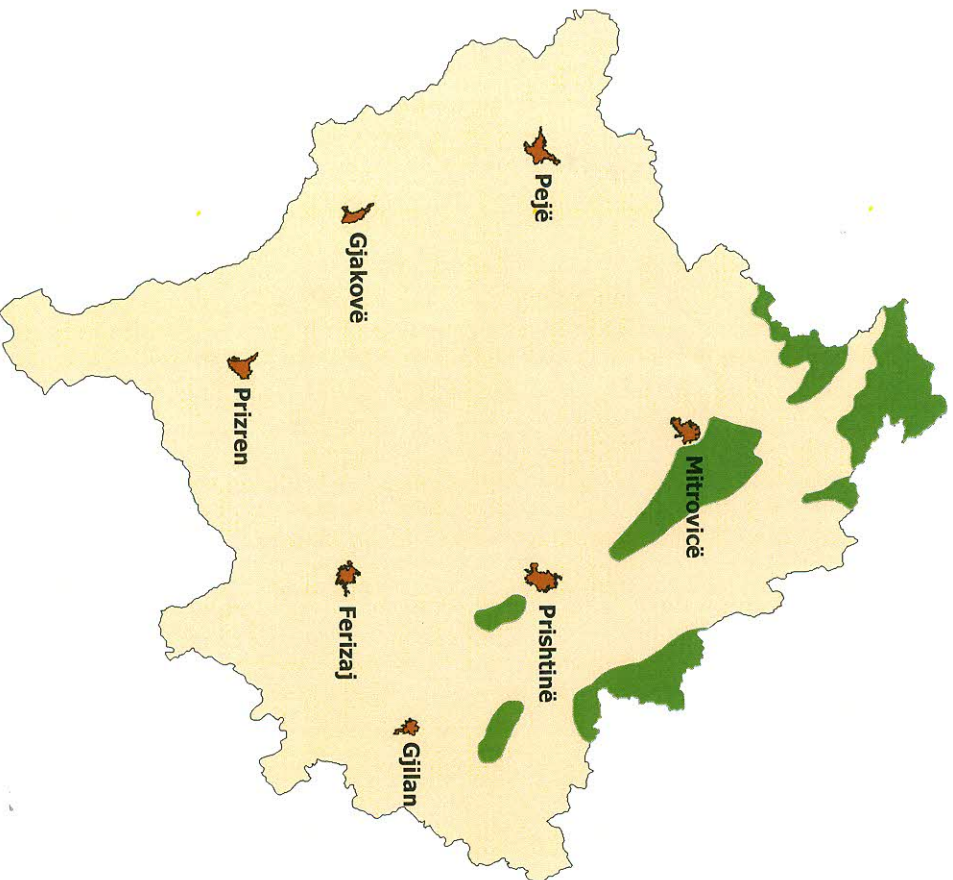


Zone of Interest for Lead and Zinc Mineralization



- Pb–Zn mineralizations known to occur besides the described occurrences, forming the “Zone of Interest for Pb-Zn Mineralization”:
1. Vllahia – Zijaç
 2. Gumnishte
 3. Karaça
 4. Bushince – Bolec
 5. Bresalcë
 6. Zhegovcë
 7. Debellde

Mineral Site Passport

Vllahi-Zijaç

Commodity:

Lead, Zinc

Map Sheet:

K 34 - 42

Ownership:

Government

Status of Project:

Under exploration.

Infrastructure:

The next paved road is at approx. 2 km distance. The next railway station is at approx. 2 km. Access to power grid is at approx. 3 km distance.

Regional Geology:

The regional geological unit is the Mitrovicë / Samadrexhë Cenozoic Volcanic Complex, situated in the External Vardar Subzone.

The geological formations are as follows:

- Alluvium - diluvium sediments of Quaternary
- Miocene volcanic rocks with latite, quartz - latite, andesite and pyroclastics
- Miocene sedimentary rocks with conglomerates, sandstone, clays, tuffs
- Ophiolitic formation of Jurassic age (peridotite, serpentinite)
- Volcanic - sedimentary rocks of the Triassic (meta-basalt, amphibolites, schist, meta-conglomerate, quartzite, marble)

Mineralization / Type of Deposit:

Propylitization, kaolinization, silicification and partly pyritization of Miocene volcanic rocks. A Cenozoic/Cretaceous lateritic weathering of Jurassic serpentinite and serpentinitized ultramafic rocks has to be examined.

Extension of Mineral Occurrence:

The surface of this area is more than 5 km².

Resources:

The only existing data are from drilling and a stream sediment sampling program. Indications for Pb, Zn, Ag, As and Hg exist.

Past Production:

Probably during Middle Ages old surface mining for Pb and Ag.

Mining Method:

Not yet planned.



Mineral Site Passport Vllahi-Zijaç

General Evaluation: The potential of the area is high.

Additional Graphics:

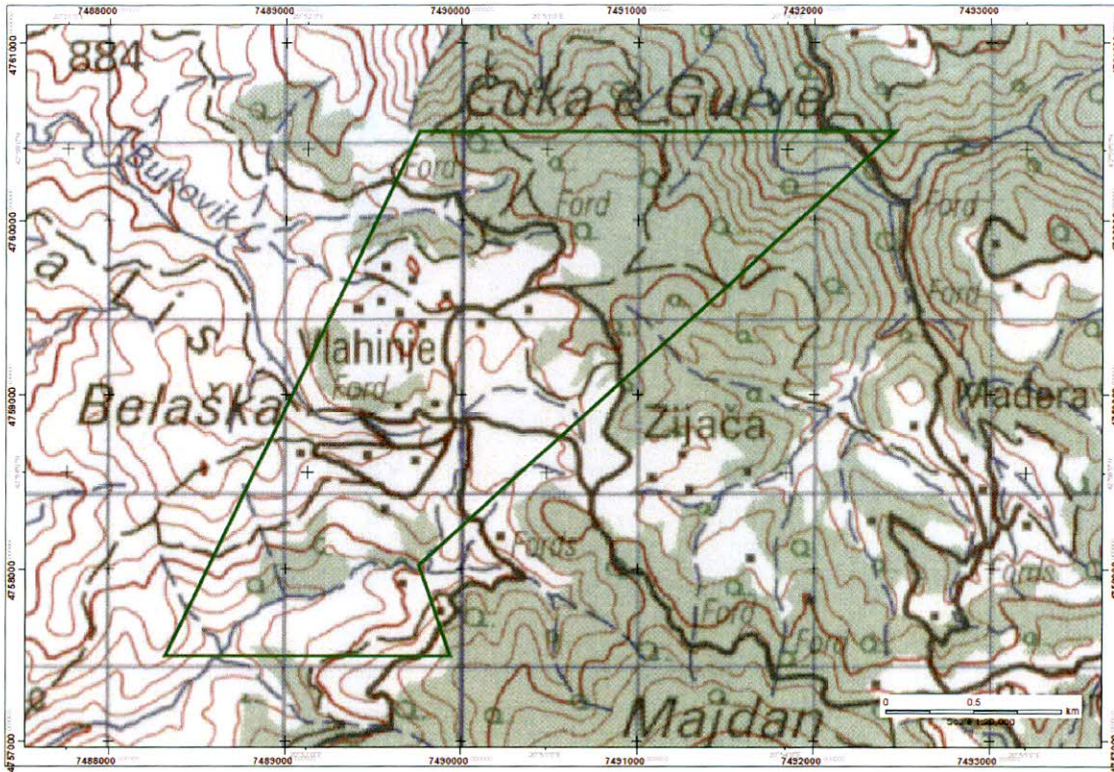


Fig. 1: Topographical Map with Zone of Interest "Vllahi-Zijaç" (green contour).

Mineral Site Passport Vllahi-Zijaç

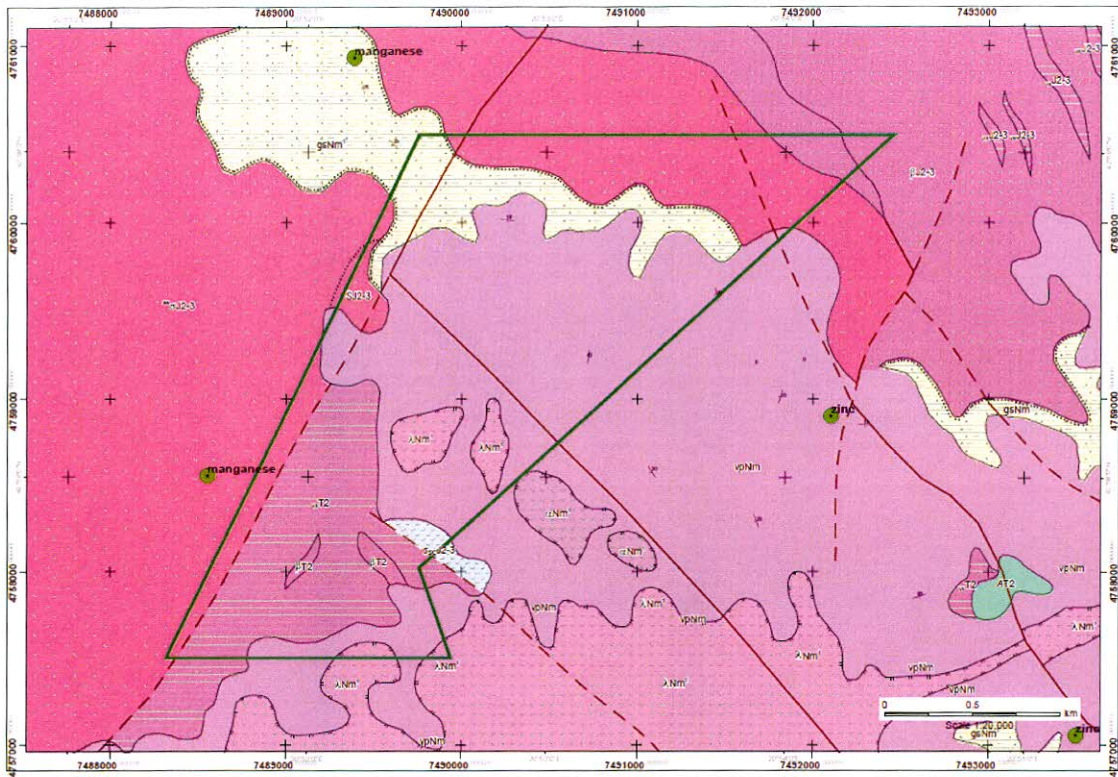


Fig. 2: Geological Map of the Vllahi-Zijaç Zone of Interest

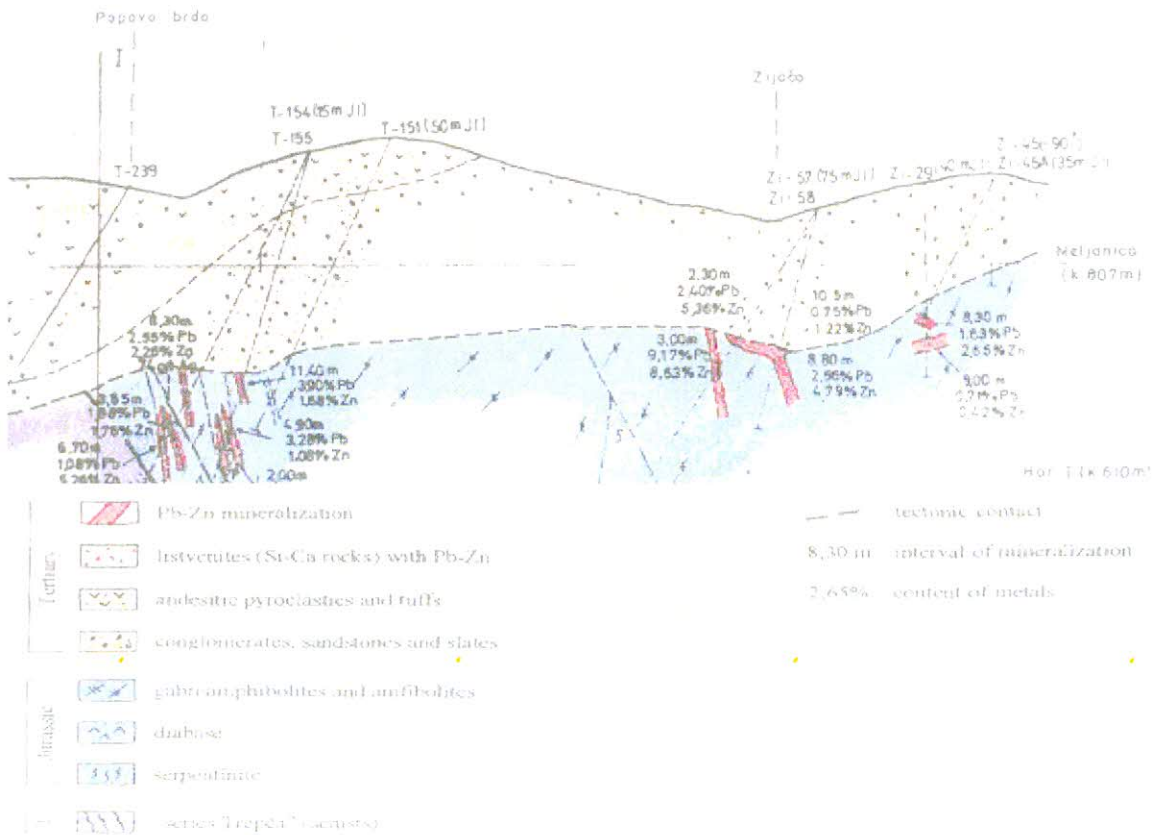


Fig. 3: Geological cross section and mineralization near Zijaça

Mineral Site Passport Vllahi-Zijaç**References:**

1. BEAK CONSULTANTS GMBH: The Compilation of the Geoscientific Maps of Kosovo – Geological Map of Kosovo 1 : 100,000 – Description of the Map Compilation – Beak Consultants GmbH, Prishtinë, March 2006, 175 p.
2. BEAK CONSULTANTS GMBH: The Compilation of the Geoscientific Maps of Kosovo – Map of Minerals (2nd Update) and Metallogenic / Minerogenic Map of Kosovo – Final Report: Map Description. - Beak Consultants GmbH - Prishtinë, March 2008.
3. BEAK CONSULTANTS GMBH: Stream Sediment Sampling Area II - Mitrovicë / Mitrovica -Samadrexhë / Somadreja, Prishtinë/Freiberg, 2008.
4. JOINT AIRBORNE GEOSCIENCE CAPABILITY: Geophysics - Interpretation of Airborne Geophysical Data from Kosovo. – Report by M.-L. Airo, D. Beamish, et. al., Geological Survey of Finland/British Geological Survey, 07.12. 2007 including Airborne Geophysical Data Maps (Magnetics, Electromagnetics and K-Th-U-Radiation).
5. SLOWEY, E.: Preliminary information Summary on Trepca undeveloped Pb-Zn deposits and major prospects in Kosovo. TMAP 08/2001.
6. Periodični Izveštaj o Izvršenim Osnovnim Geološkom Istraživanjima Olova i Cinka u Rudnom Polju Trepče u 1985. god. Za period juli – septembar 1985. god.
7. Periodični Izveštaj o Izvršenim Osnovnim Geološkom Istraživanjima Olova i Cinka u Rudnom Polju Trepče u 1984 god. Za period januar – mart 1985. god.
8. Periodični Izveštaj o Izvršenim Osnovnim Geološkom Istraživanjima Olova i Cinka u Rudnom Polju Trepče po Projektu Radova za 1985 god. Za period januar – mart 1986 god.
9. Godišnji Izveštaj o Izvršenim Osnovnim Geološkom Istraživanjima Olova i Cinka u Rudnom Polju Trepče u 1986 god.
10. Periodični Izveštaj o Izvršenim Osnovnim Geološkom Istraživanjima Olova i Cinka u Rudnom Polju "TREPČE" po Prgramu Radova za 1987 god. Za period januar – septembar 1987. god.
11. Periodični Izveštaj o Izvršenim Osnovnim Geološkom Istraživanjima Olova i Cinka u Rudnom Polju "TREPČE" po Programu Radova za 1986 god. Za period januar – mart 1987 god.
12. Kvartalni Izveštaj o Izvršenim Osnovnim Geološkom Istraživanjima Olova i Cinka u Rudnom Polju "TREPČE" po Projektu Radova za 1987 god. Za period januar – mart 1988 god.
13. Godišnji Izveštaj o Izvršenim Osnovnim Geološkom Istraživanjima Olova i Cinka u Rudnom Polju "TREPČE" po Projektu Radova za 1989 god.
14. Geološka Karta Vlahinja Region, 1: 5,000, Beograd 1976 (Prilog 2, 3, 4 and 5).
15. BEAK CONSULTANTS GMBH: Kosovo Mineral Resources Management Plan, 2009.
16. Kosova Logistik GmbH & Kartographie Huber sh.p.k.: Kosovo Mineral Resources Management Plan 2010.

Mineral Site Passport Vllahi-Zijaç

For further details see the data base at the ICMM.



**Independent Commission for Mines and Minerals (ICMM)
Komisioni i Pavarur për Minera dhe Minerale
Nezavisna Komisija za Rudnike i Minerale**

Armend Daci Street No. 1

1000 Pristina, Kosovo

Tel.: +381 38 240 252

Fax: +381 38 245 844

e-mail: ICMM@kosovo-mining.org

<http://www.kosovo-mining.org>

**Support to ICMM to develop the Geochemical Survey in Kosovo
EU GEOS**

EuropeAid/128027/D /SER/KOS



A project implemented
by the Contractor

abc-associated business
consultants gmbh /
Brenk Systemplanung GmbH
c/o abc-associated business
consultants gmbh
Dreilindenstr. 84
45128 Essen
Germany
Tel:+49 201 125289 80
Fax:+49 201 125289 81

This project is funded
by the European
Commission Liaison Office

Delegation of the European
Commission Liaison Office
Kosova St. 1
10000 Pristina
Kosovo
Tel: +381 38 51 31 504
Fax: +381 38 51 31 307

The European Commission is the EU's executive body.

"The European Union is made up of 27 Member States who have decided to gradually link together their know-how, resources and destinies. Together, during a period of enlargement of 50 years, they have built a zone of stability, democracy and sustainable development whilst maintaining cultural diversity, tolerance and individual freedoms. The European Union is committed to sharing its achievements and its values with countries and peoples beyond its borders".

"This publication has been produced with the assistance of the European Union. The contents of this publication are the sole responsibility of abc-associated business consultants gmbh / Brenk Systemplanung GmbH and can in no way be taken to reflect the views of the European Union."

