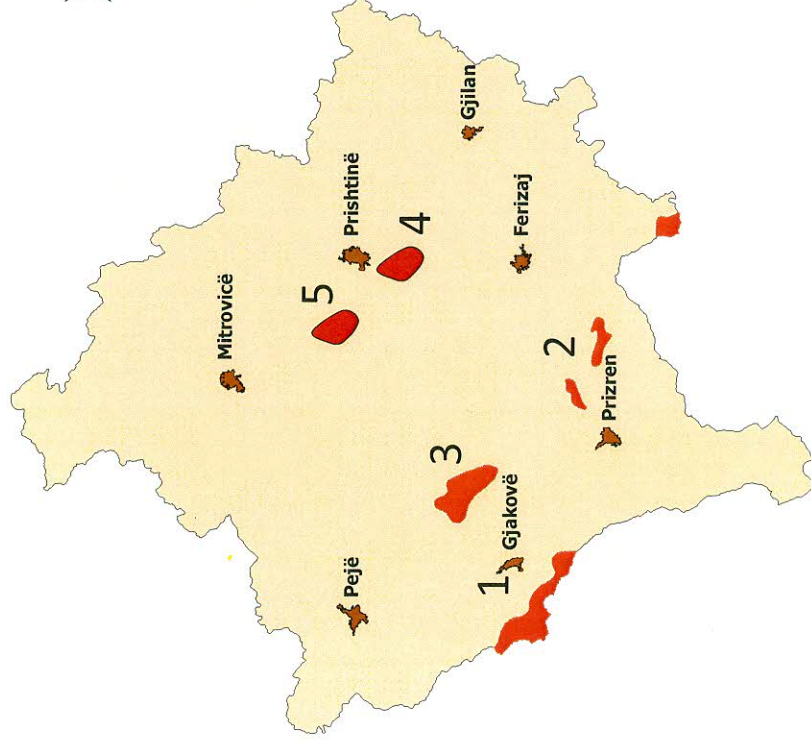


Chromium

➤ Locations of chromite deposits:

1. Deva region
2. Brezovica region
3. Rahoveci region
4. Goleshi region
5. Dobrosheci region



Mineral Site Passport

Deva

Commodity:

Chromium

Map Sheet:

K34 – 53 D and K 34 – 65 B

Ownership:

Government

Status of Project:

Previous mining, partly explored.

**Infrastructure:**

Next paved road is approx. 2 km away. Next power line access is at 2 km distance. 16 km is the distance to the next railway station. Location is 7 to 9 km SW of Gjakovë/Dakovica. The mine site is located in the south-western part of Kosovo at the border to Albania.

Regional Geology:

The deposits and occurrences of chromium are embedded in Jurassic ophiolites of the ultramafic complex of Gjakova.

Mineralization / Type of Deposit:

The ore appears disseminated or banded with magmatic layering and as lenses. They are hosted by dunites, harzburgites or peridotites. The ore bodies are up to a few hundred meters long and irregular in shape. Mineralogy is simple and mainly composed of chromite. From the Albanian part of the chromium district platinum group minerals are known.

Extension of Mineral Occurrence:

The area extends over more than 5 km².

Resources:

Indicated resources amounted to a total of 300,000 t (status 1978).

Mining was halted in 1982.

Past / Current Production:

Many old mine shafts and other workings occur all over the place. Until 1982 132,000 t of chromite ore at an average grade of 44 % have been mined. The most important ore fields were Devë/Deva and Babj Boks accompanied by smaller chromium occurrences in the neighborhood.

After the exploitation of chromium by the Germans, the “Deva holding company” was founded for mining purposes immediately after the Second World War. For about ten years, untreated raw chromium ore was trucked to Albania for processing.

Later a processing facility (concentrator) was built to produce two kinds of chromium concentrates with 48 % and 53 % Cr₂O₃. Chromium ore imports from Albania ranged from 30,000 to 50,000 t per year until the plant was closed in 1991 (Site Report from R. Longstaff, “Deva” Chrome Mine, 26.10.2000).

Mining Method:

Underground Mine

Mineral Site Passport Deva

General Evaluation:

Further exploration is required for the delineation of the remaining potential.

Additional Graphics:

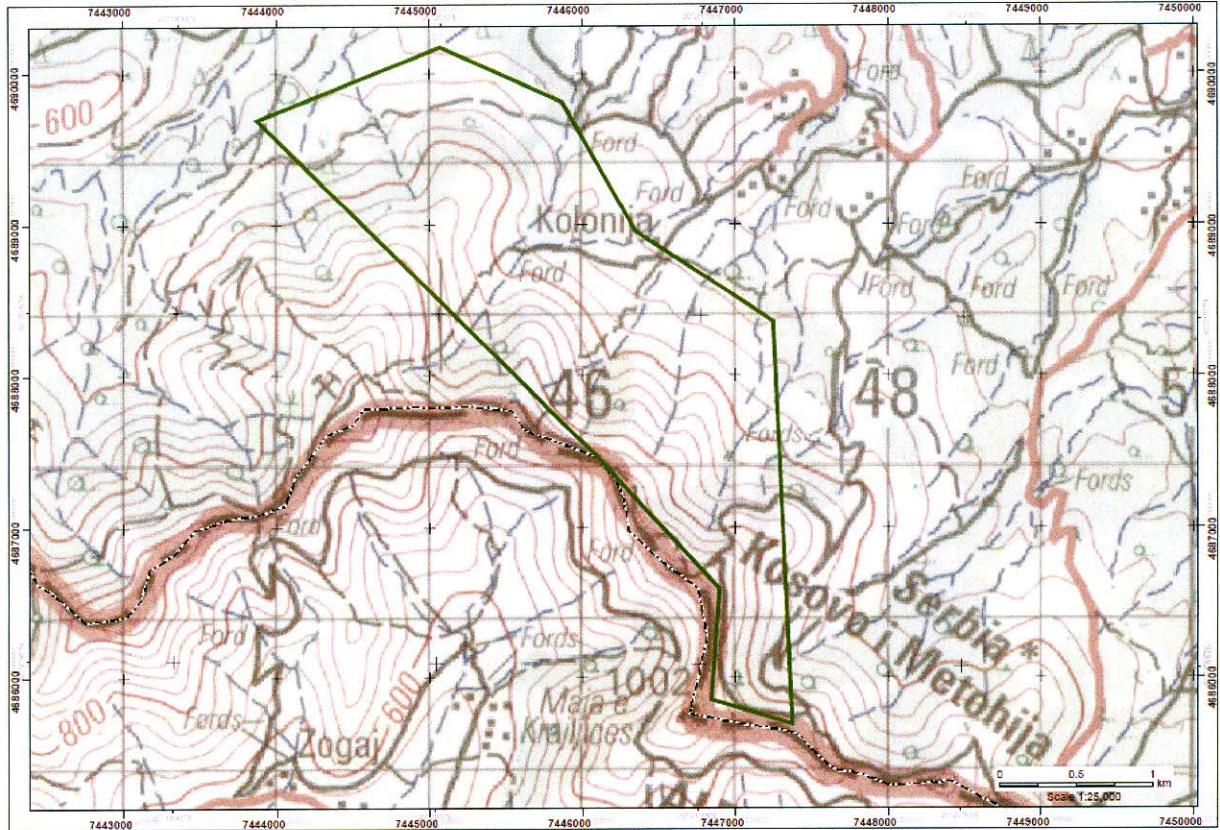


Fig. 1: Topographical map with Zone of Interest "Deva" (green line) near the border to Albania.

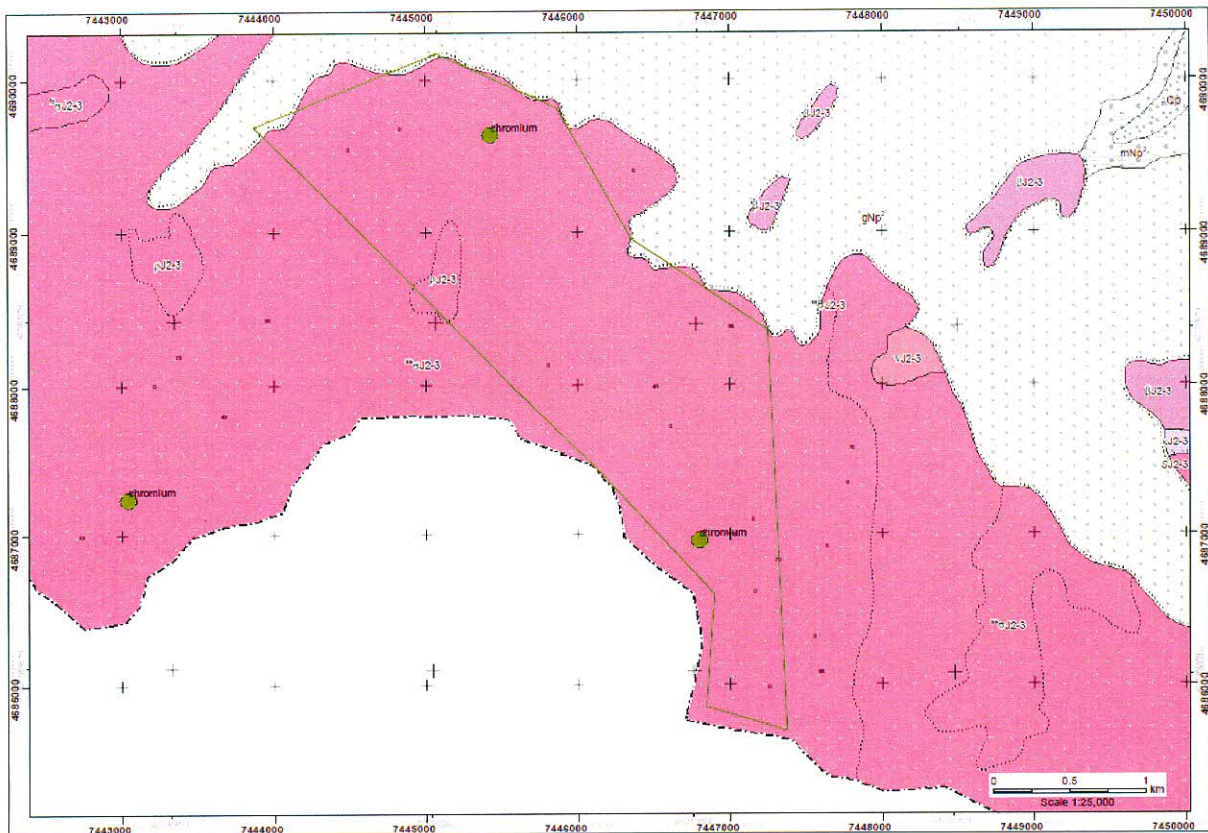
Mineral Site Passport Deva

Fig. 2: Geological map with Zone of Interest "Deva" (green line).

References:

1. BEAK CONSULTANTS GMBH: The Compilation of the Geoscientific Maps of Kosovo – Geological Map of Kosovo 1 : 100,000 – Description of the Map Compilation – Beak Consultants GmbH, Prishtinë, March 2006, 175 p.
2. BEAK CONSULTANTS GMBH: The Compilation of the Geoscientific Maps of Kosovo – Map of Minerals (2nd Update) and Metallogenic / Minerogenic Map of Kosovo – Final Report: Map Description. - Beak Consultants GmbH - Prishtinë, March 2008.
3. Dushi, M.: Pasuritë Minerale të Kosovës. – Akademia e Shkencave dhe e Arteve e Kosovës, Libri 15, Libri 16, Prishtinë 2009, in Albanian (The Mineral Resources of Kosova, 2 vol., with English summary).
4. JOINT AIRBORNE GEOSCIENCE CAPABILITY: Geophysics - Interpretation of Airborne Geophysical Data from Kosovo. – Report by M.-L. Airo, D. Beamish, et. al., Geological Survey of Finland/British Geological Survey, 07.12. 2007 including Airborne Geophysical Data Maps (Magnetics, Electromagnetics and K-Th-U-Radiation).
5. BURGATH, K. P.: Der Albanische Mirdita-Ophiolith und seine PGE-Anreicherungen. – Mitt. Österr. Ges. 144 (1999), p. 23-44.
6. JANKOVIĆ, S.: Yugoslavia. - Mineral deposits of Europe – Vol. 2 – Southeast Europe, Springer Verlag, 1982.
7. Elaborat o Istražnim Radovima na Djakovičkom Serpentinitskom Masivu u Toku 1968 Godine. ICMM Reg.-No. 0003/A.
8. Elaborat o Istražnim Radovima na Djakovičkom Serpentinitskom Masivu u Toku 1969 Godine – ICMM Reg.-No. 0004/A.
9. BEAK CONSULTANTS GMBH: Kosovo Mineral Resources Management Plan, 2009.
10. Kosova Logistik GmbH & Kartographie Huber sh.p.k.: Kosovo Mineral Resources Management Plan 2010.

Mineral Site Passport Deva

For further details see the data base at the ICMM.



**Independent Commission for Mines and Minerals (ICMM)
Komisioni i Pavarur për Minera dhe Minerale
Nezavisna Komisija za Rudnike i Minerale**

Armend Daci Street No. 1

1000 Pristina, Kosovo

Tel.: +381 38 240 252

Fax: +381 38 245 844

e-mail: ICMM@kosovo-mining.org

<http://www.kosovo-mining.org>

**Support to ICMM to develop the Geochemical Survey in Kosovo
EU GEOS
EuropeAid/128027/D/SER/KOS**



A project implemented
by the Contractor

abc-associated business
consultants gmbh /
Brenk Systemplanung GmbH
c/o abc-associated business
consultants gmbh
Dreilindenstr. 84
45128 Essen
Germany
Tel:+49 201 125289 80
Fax:+49 201 125289 81

An EU funded Project
managed by the European
Commission Liaison Office

Delegation of the European
Commission Liaison Office
Kosova St. 1
10000 Pristina
Kosovo
Tel: +381 38 51 31 504
Fax: +381 38 51 31 307

The European Commission is the EU's executive body.

"The European Union is made up of 27 Member States who have decided to gradually link together their know-how, resources and destinies. Together, during a period of enlargement of 50 years, they have built a zone of stability, democracy and sustainable development whilst maintaining cultural diversity, tolerance and individual freedoms. The European Union is committed to sharing its achievements and its values with countries and peoples beyond its borders".

"This publication has been produced with the assistance of the European Union. The contents of this publication are the sole responsibility of abc-associated business consultants gmbh / Brenk Systemplanung GmbH and can in no way be taken to reflect the views of the European Union."