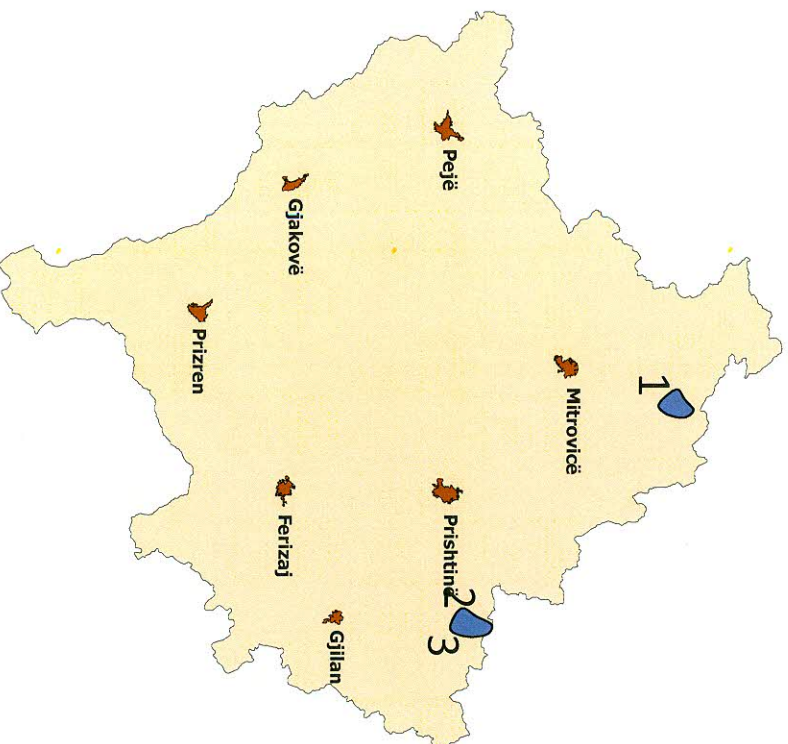


## Manganese

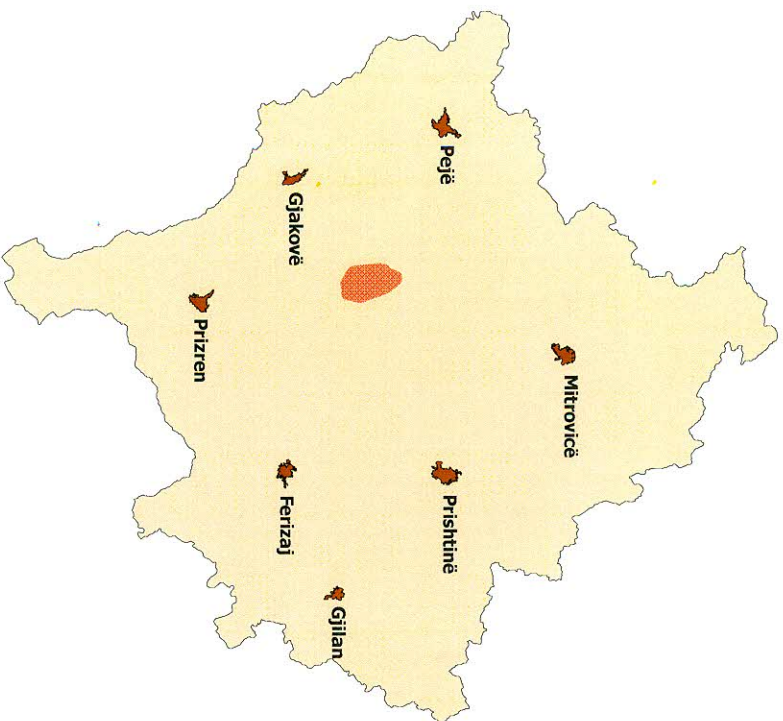
➤ Manganese occurs together with lead and zinc mineralization at:

1. NW of Vllahi
2. Artanë
3. Bolevc



## Bauxite

- The most important bauxite deposit is situated at Gremnik mountain, Klina Municipality



**Mineral Site Passport**

# Grebnik

**Commodity:**

Bauxite

**Map Sheet:**

K 34 - 54 A

**Ownership:**

Government

**Status of Project:**

Former production

**Infrastructure:**

The project possesses a satisfactory infrastructure.

**Regional Geology:**

The deposits are situated in the northern part of the Rahovec ultramafic rock complex, which is characterized by Jurassic serpentinites and basic to ultrabasic intrusives with overlying platform carbonates and flysch of Upper Cretaceous age. Stratigraphically, the ore occurs between Lower Turonian and Maastrichtian platform limestones.

**Mineralization / Type of Deposit:**

The diaspore bauxite ore stems from ultrabasic rocks, which underwent lateritic weathering during the sedimentation hiatus in the Upper Cretaceous. The lateritic crusts were then reworked and transported to the karstic areas. Thus the footwall of the bauxite deposits is represented by a palaeo-karst surface of irregular shape, while the hanging wall is flat. The thickness of the ore bodies ranges from 40 to 60 m. The overburden is locally very thick and can reach up to 200 m.

**Extension of Mineral Occurrence:**

Grebnik occupies an area of 15 km<sup>2</sup> with a total of 45 to 50 of known bauxite occurrences.

**Resources:**

In the year 2000 the mineral resource stood at 4 to 5 Mio. t of bauxite. Typical bauxite assay results are:

SiO <sub>2</sub>	=	1.5 - 3.5 %
Al <sub>2</sub> O <sub>3</sub>	=	45 - 51 %
Fe <sub>2</sub> O <sub>3</sub>	=	30 - 38 %
Ti <sub>2</sub> O <sub>3</sub>	=	1.8 - 8 %

The overlying limestone meets the quality standards for cement production.

**Past Production:**

Between 1996 – 1999 about 3,3 millions of bauxite were produced. Bauxite operations were then halted because of the political situation. Limestone production continued.

**Mining Method:**

In the past open cast mining from individual small pits. Greatest annual production was 200,000 t.



**Mineral Site Passport Grebnik**

**General Evaluation:**

The economics of the bauxite extraction depend on the viability of a mining concept for the overlying limestone.

**Additional Graphics:**

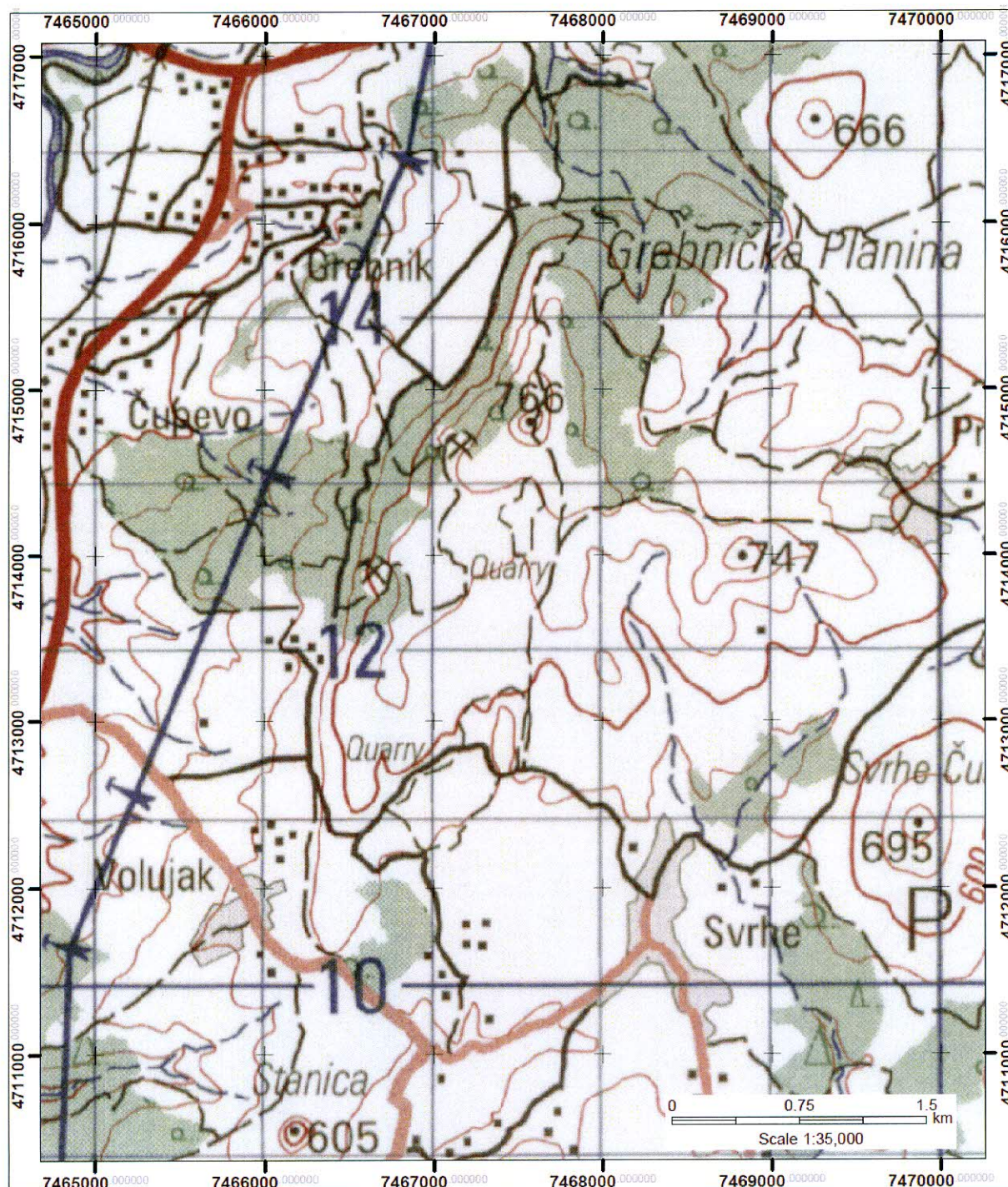


Fig. 1: Topographical Map of the Grebnik area.

Mineral Site Passport Grebnik

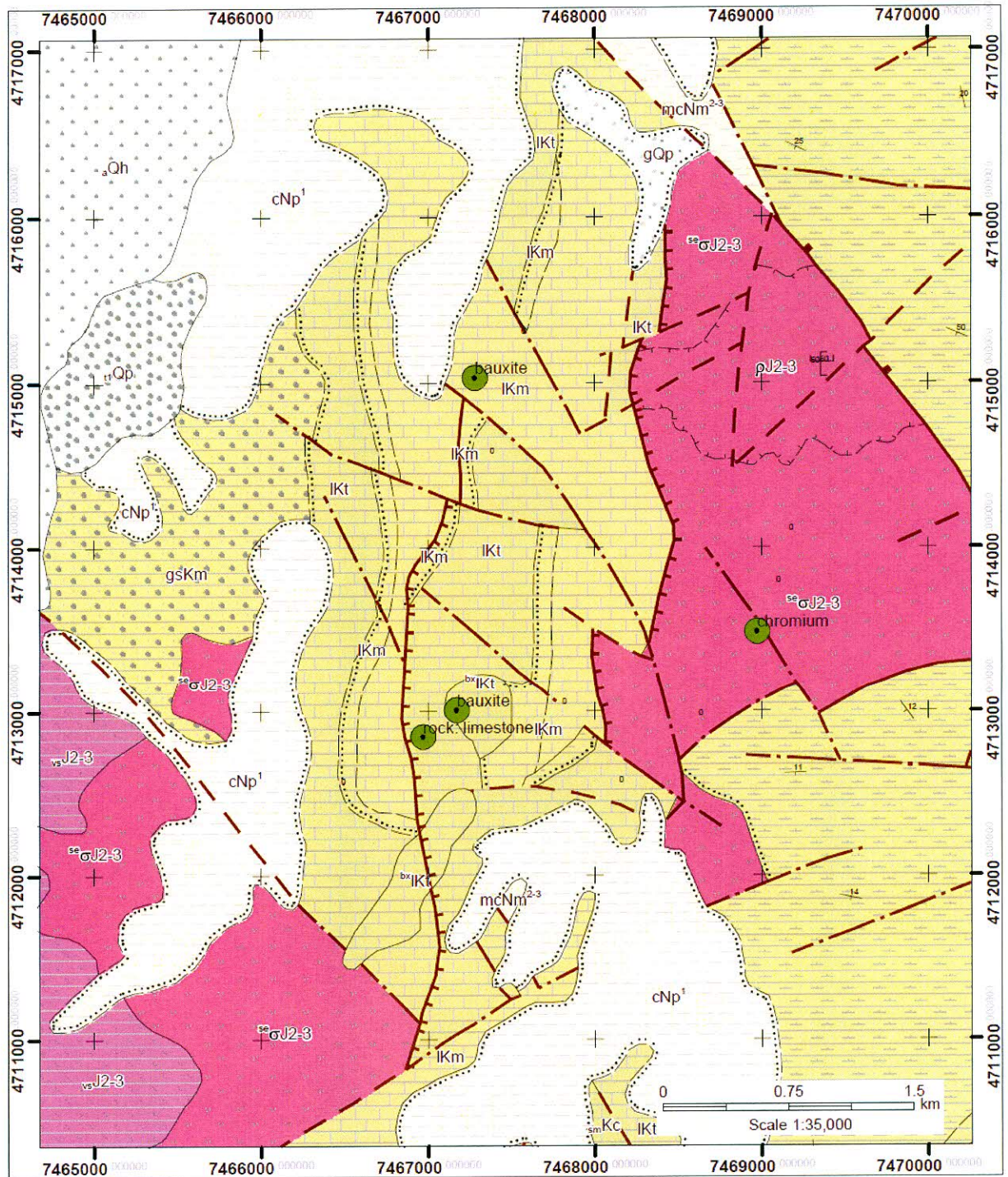


Fig. 2: Geological map of the Grebnik mining area.

**Mineral Site Passport Grebnik**

**References:**

1. Bauxite Mines Kosova / Klina – 20 Years J.O.A.L. Electric power industry of Kosovo – Booklet, Prishtina 1986, 16 p.
2. BEAK CONSULTANTS GMBH: The Compilation of the Geoscientific Maps of Kosovo – Map of Minerals (2nd Update) and Metallogenic / Minerogenic Map of Kosovo – Final Report: Map Description. - Beak Consultants GmbH - Prishtinë, March 2008.
3. DUSHI, M.: Pasuritë Minerale të Kosovës. – Akademia e Shkencave dhe e Arteve e Kosovës, Libri 15, Libri 16, Prishtinë 2009, in Albanian (The Mineral Resources of Kosova, 2 vol., with English summary).
4. ESTAPIII - Development of a Mining Strategy – Energy Sector Technical Assistance Project III - Task 2: Assess Economic Potential – Descriptive Economic Assessment Database. – RWE Power International/RE GmbH and Beak Consultants GmbH, Prishtinë, 23.01.2007.
5. Konceptija 1984 – Konceptija Razvoja Geoloških Istraživanja do 2000.godine na Teritoriji SAP Kosovo. – SOUR Geozavod-Beograd RO Institut za Istraživanje Mineralnih Sirovina, Beograd 1984, 429 p.
6. Kosovo 2005 – Kosovo – Land of Opportunity for European Mining and Energy. – Mining Journal, Special Publication, London, October 2005.
7. BEAK CONSULTANTS GMBH: Kosovo Mineral Resources Management Plan, 2009.
8. Kosova Logistik GmbH & Kartographie Huber sh.p.k.: Kosovo Mineral Resources Management Plan 2010.

**Mineral Site Passport Grebnik**

For further details see the data base at the ICMM.



**Independent Commission for Mines and Minerals (ICMM)  
Komisioni i Pavarur për Minera dhe Minerale  
Nezavisna Komisija za Rudnike i Minerale**

Armend Daci Street No. 1

1000 Pristina, Kosovo

Tel.: +381 38 240 252

Fax: +381 38 245 844

e-mail: [ICMM@kosovo-mining.org](mailto:ICMM@kosovo-mining.org)

<http://www.kosovo-mining.org>

**Support to ICMM to develop the Geochemical Survey in Kosovo  
EU GEOS  
EuropeAid/128027/D/SER/KOS**



A project implemented  
by the Contractor

abc-associated business  
consultants gmbh /  
Brenk Systemplanung GmbH  
c/o abc-associated business  
consultants gmbh  
Dreilindenstr. 84  
45128 Essen  
Germany  
Tel:+49 201 125289 80  
Fax:+49 201 125289 81

An EU funded Project  
managed by the European  
Commission Liaison Office

Delegation of the European  
Commission Liaison Office  
Kosova St. 1  
10000 Pristina  
Kosovo  
Tel: +381 38 51 31 504  
Fax: +381 38 51 31 307

The European Commission is the EU's executive body.

"The European Union is made up of 27 Member States who have decided to gradually link together their know-how, resources and destinies. Together, during a period of enlargement of 50 years, they have built a zone of stability, democracy and sustainable development whilst maintaining cultural diversity, tolerance and individual freedoms. The European Union is committed to sharing its achievements and its values with countries and peoples beyond its borders".

"This publication has been produced with the assistance of the European Union. The contents of this publication are the sole responsibility of abc-associated business consultants gmbh / Brenk Systemplanung GmbH and can in no way be taken to reflect the views of the European Union."

## Copper

➤ Copper mineralization is known from many places all over Kosovo:

1. Suvo Rudishte
2. Banjskë
3. Guri i kuq (Rahovec)
4. Rexhance (Hani i Elezit)
5. Brod polymetallic mineralisations
6. Jabllanicë and Struzhë (Prizren)
7. Mushnikovë
8. Binaq (Karadak)
9. Pashtriku

